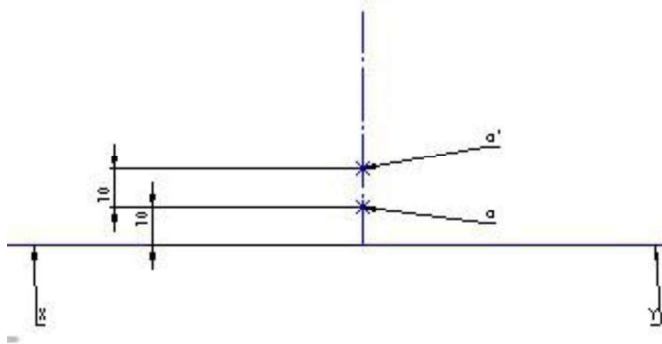


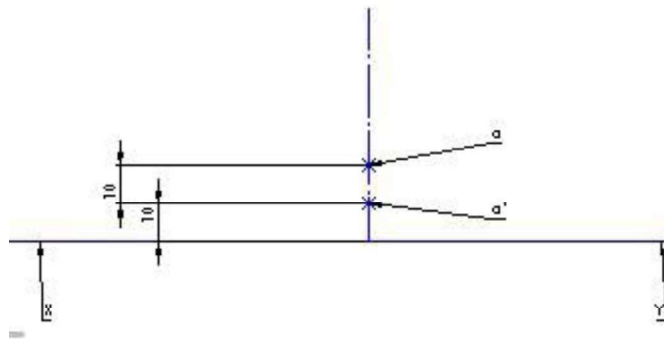
Q.1 A point A 10 mm above the HP and 20 mm behind the VP. Draw the projection.

Sol.



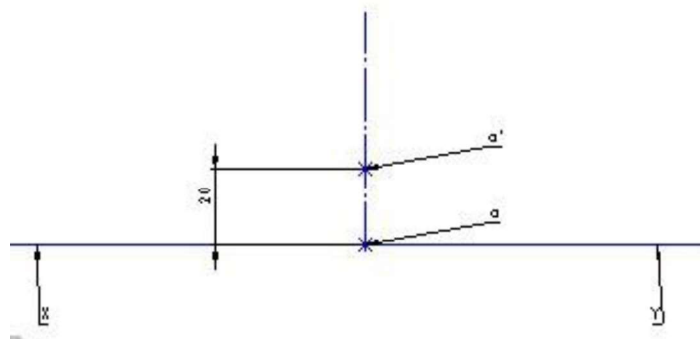
Q.2 A point A 20 mm above the HP and 10 mm behind the VP. Draw the projection.

Sol.



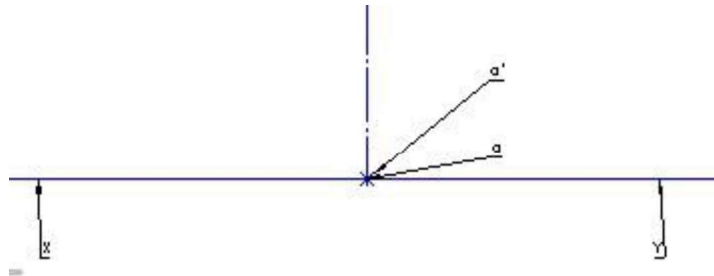
Q.3 A point A in HP and 20 mm behind the VP. Draw the projection.

Sol.

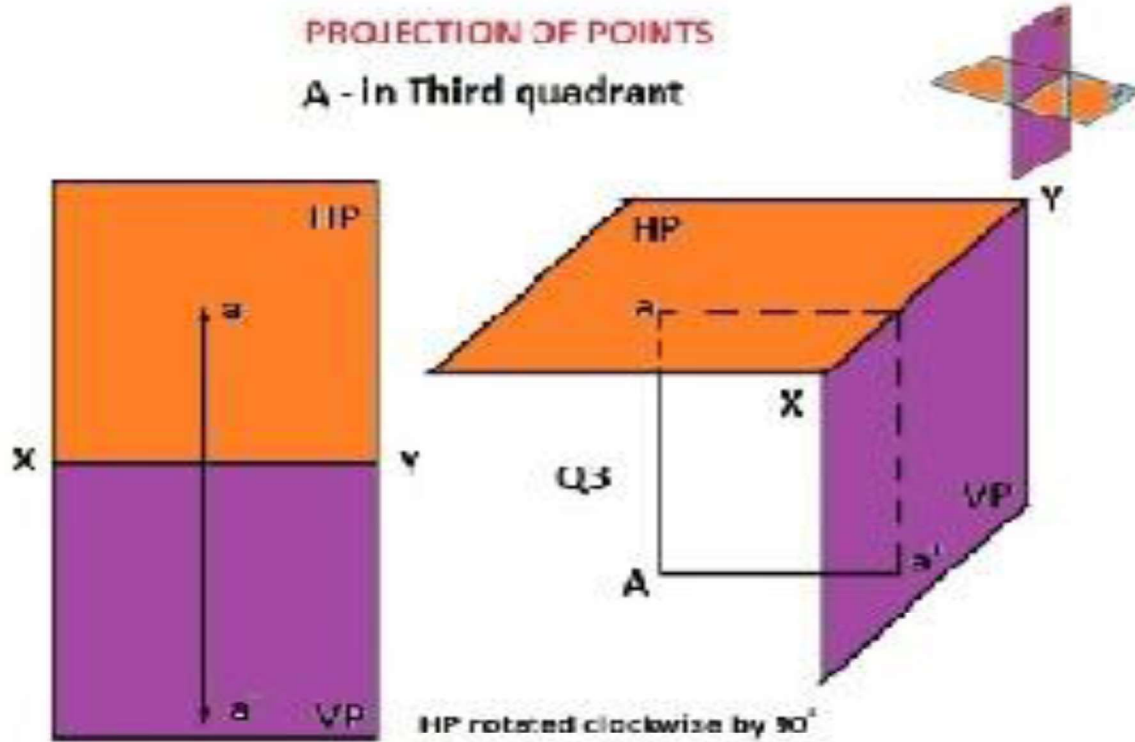


Q.4 .A point A in HP and on VP. Draw the projection.

Sol.

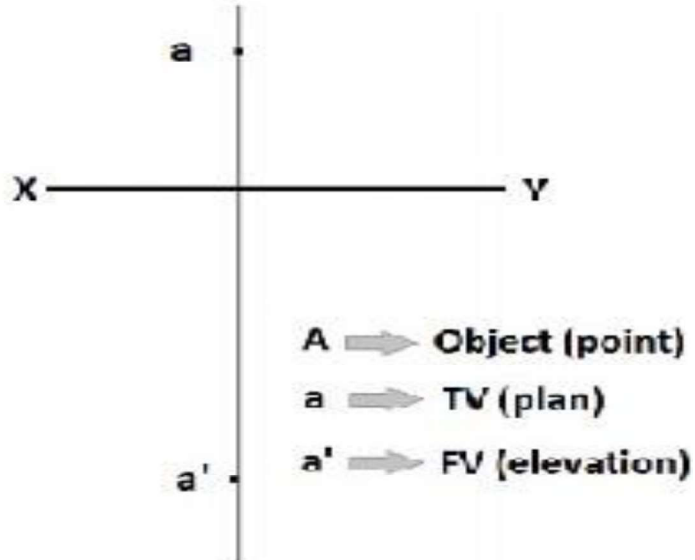
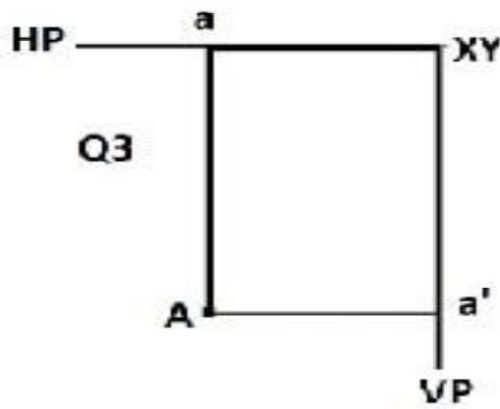


(iii) Third angle projection:-

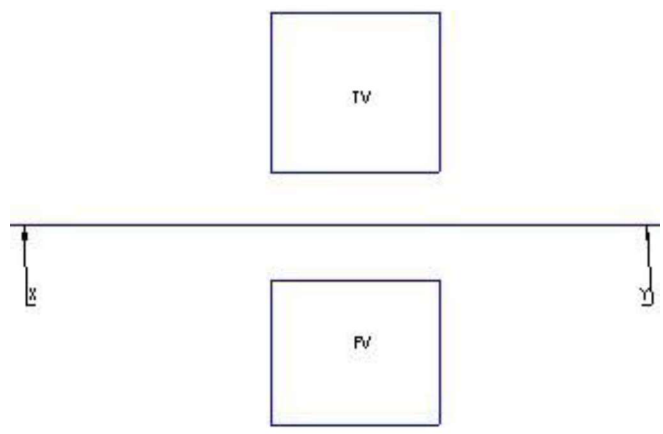


**PROJECTION OF POINTS**

**A - in Third quadrant**



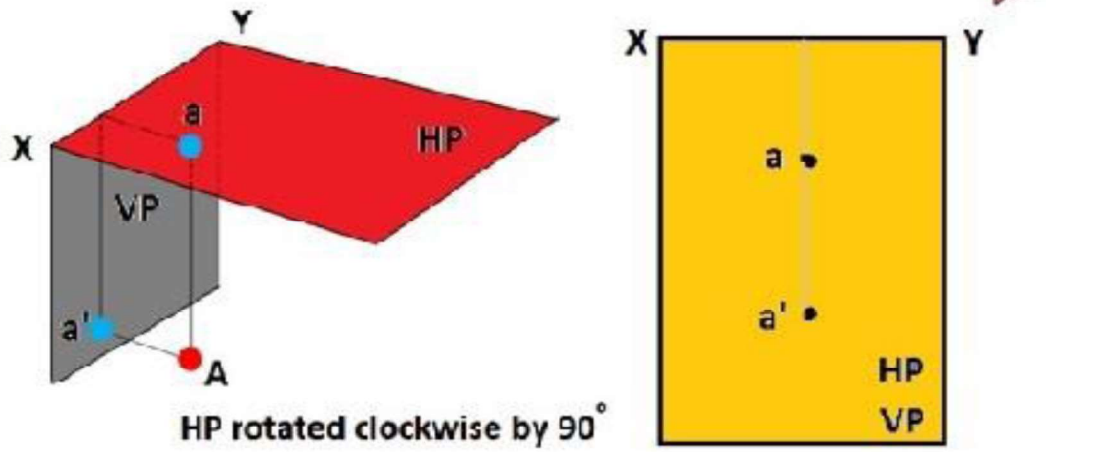
Point A in Third quadrant	
A below HP	a' - FV (Elevation) below XY
A behind VP	a - TV (Plan) above XY



(iv) Fourth angle projection

**PROJECTION OF POINTS**

**A - in Fourth quadrant**

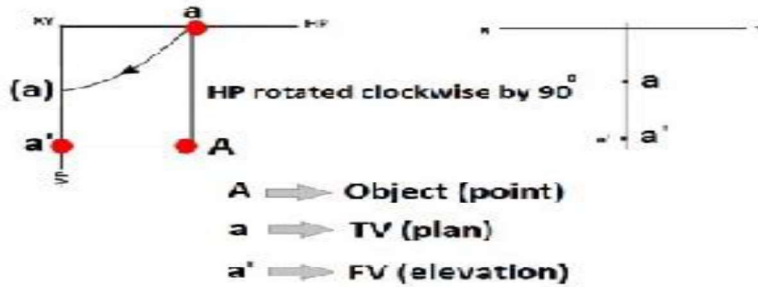


**A** → **Object (point)**

**a** → **TV (plan)**

**a'** → **FV (elevation)**

**PROJECTION OF POINTS**  
**A - in Fourth quadrant**



**Point A in Fourth quadrant**

A below HP	a' - FV (Elevation) below XY
A in front of VP	a - TV (Plan) below XY