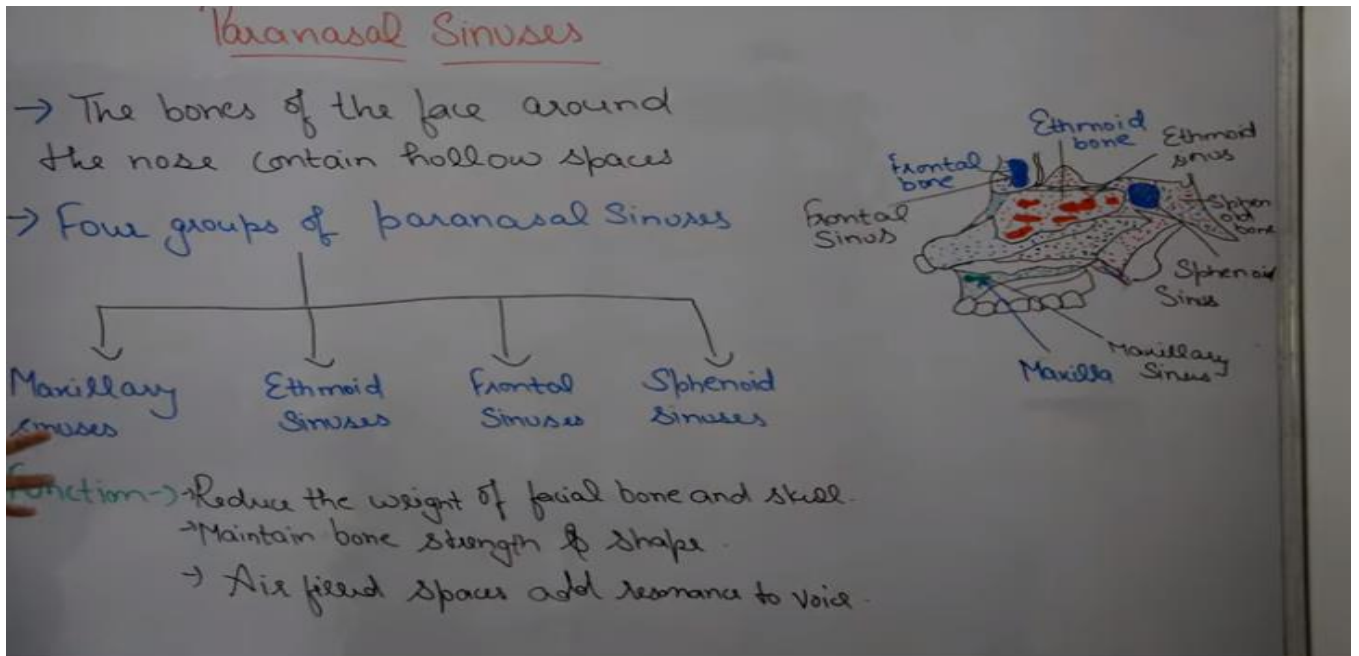
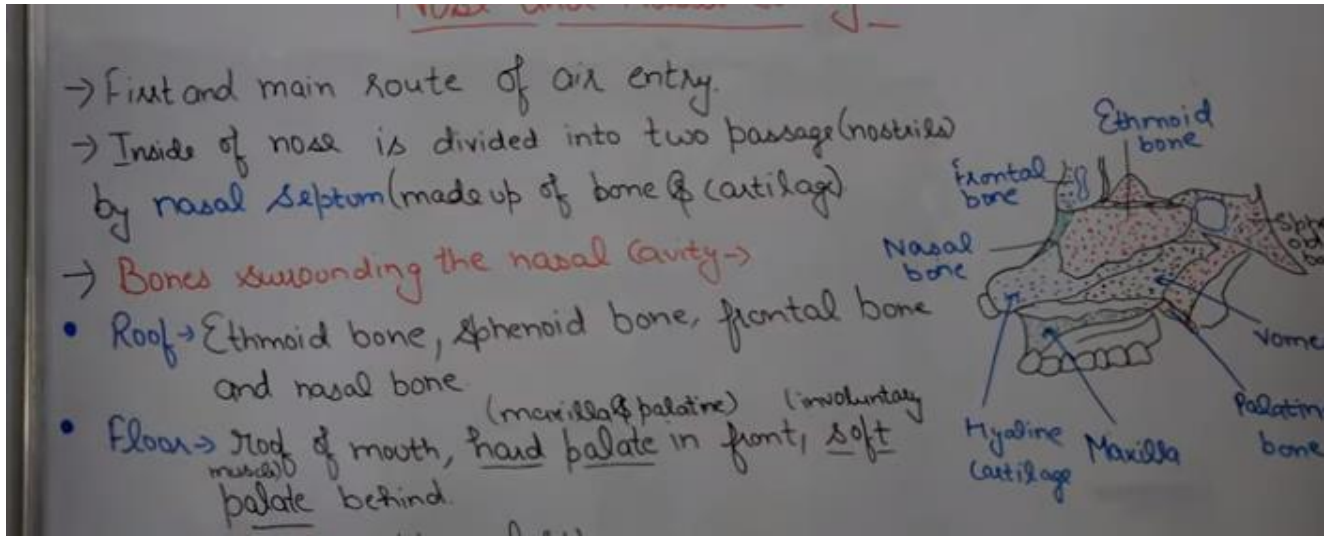


## Structure of Nose

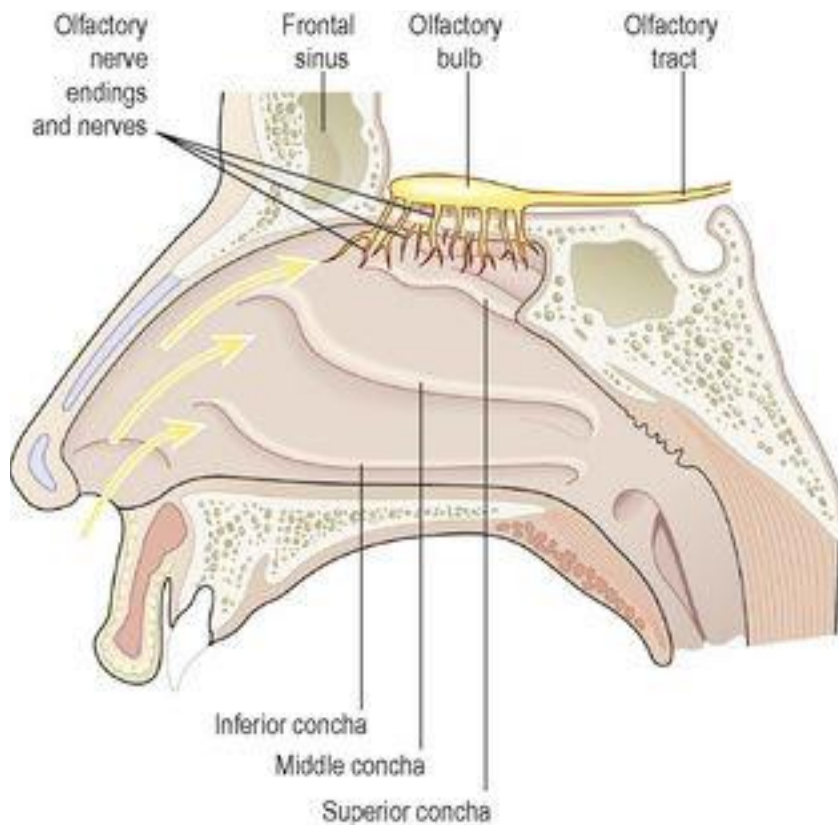
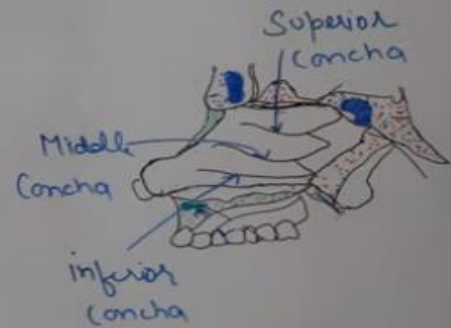
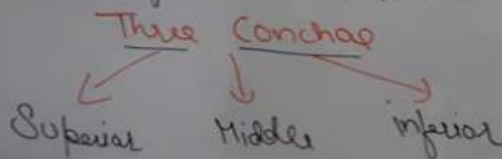


# Nasal Conchae

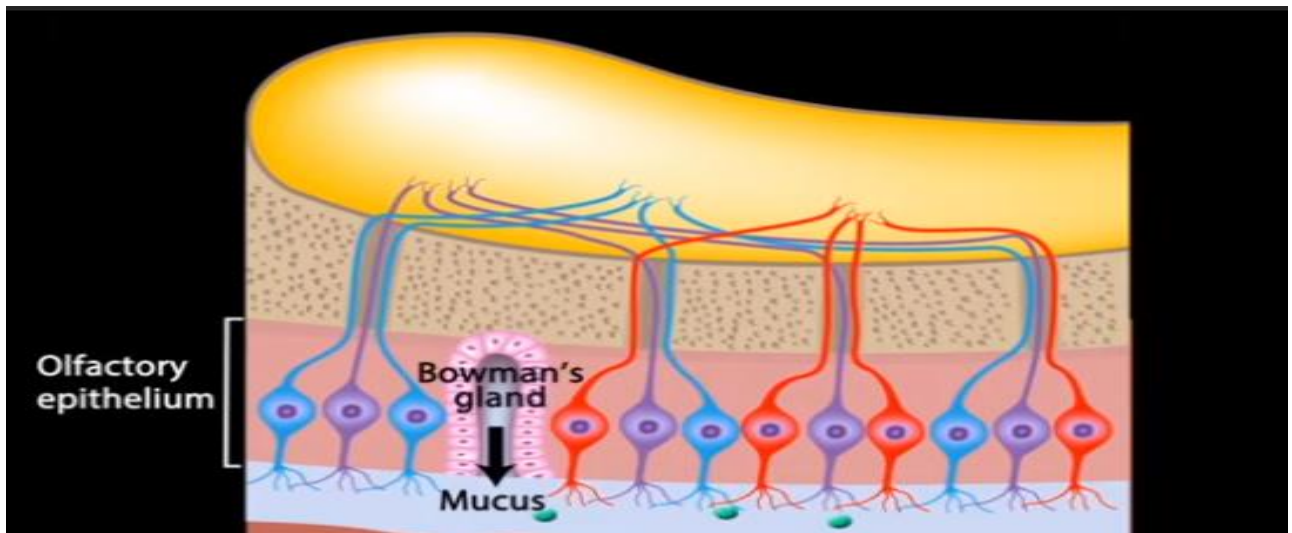
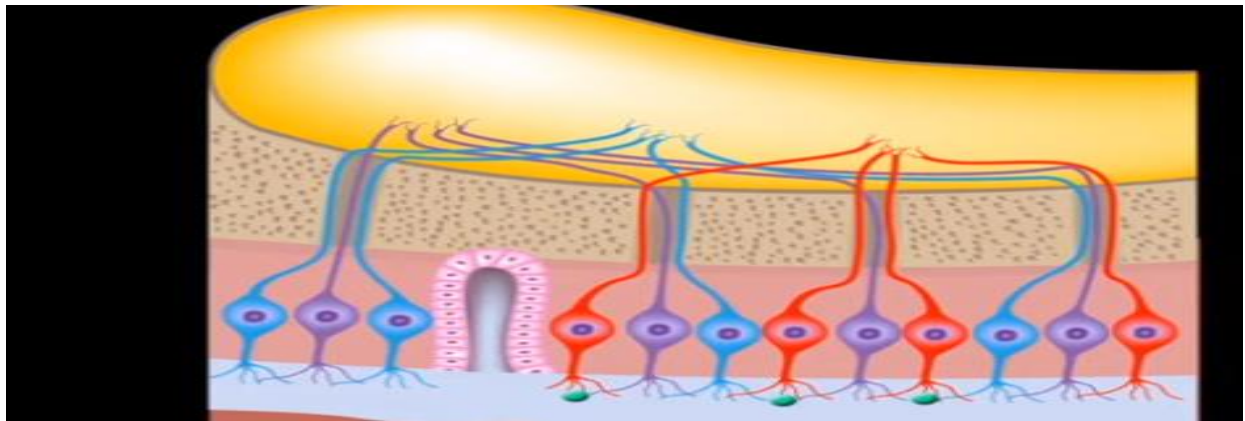
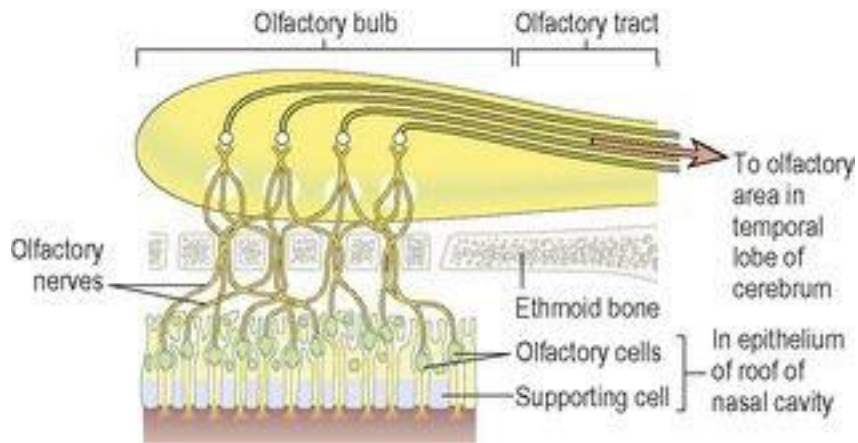
→ Bones called nasal conchae project into the nasal cavity - forming a series of folds (turbinates).

Function → increase the surface area of nasal cavity.

→ Allow more effective exchange of heat and moisture.



# The olfactory structures



# Functions of nose

Warming air

Filtering and cleaning air

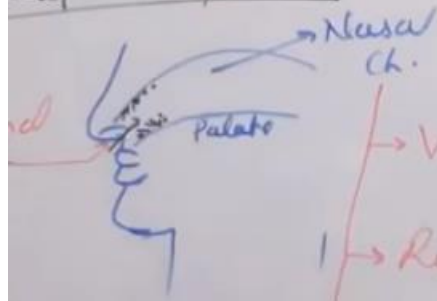
Moisten air

Smell

Cilia

## Breathing & Exchange of gases

### Respiratory tract



→ **Vestibular** → filtration of air  
ch. • lined by hair  
• mucous memb.

→ **Respiratory** → acts as air conditioner.  
ch. • lined with mucous memb.  
• vascular

→ **Olfactory**  
ch. (Smell)  
\* lined with sensory memb. (olfactory cells)

" **Schneiderian**  
memb."

a) when we inhale cold air → Blood supply to memb. ↑ → heat radiation to air & air gets warmer

b) when we inhale warm/hot air. → more mucous → mucous evaporates → heat is taken from hot air.

