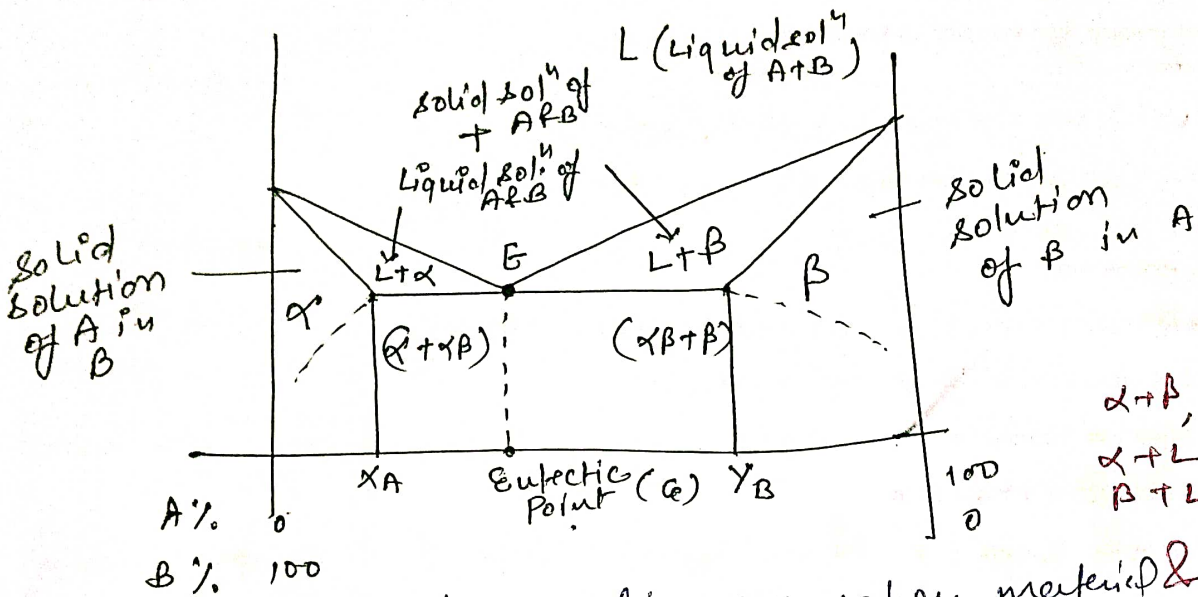
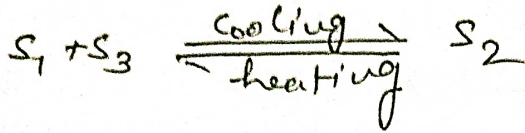


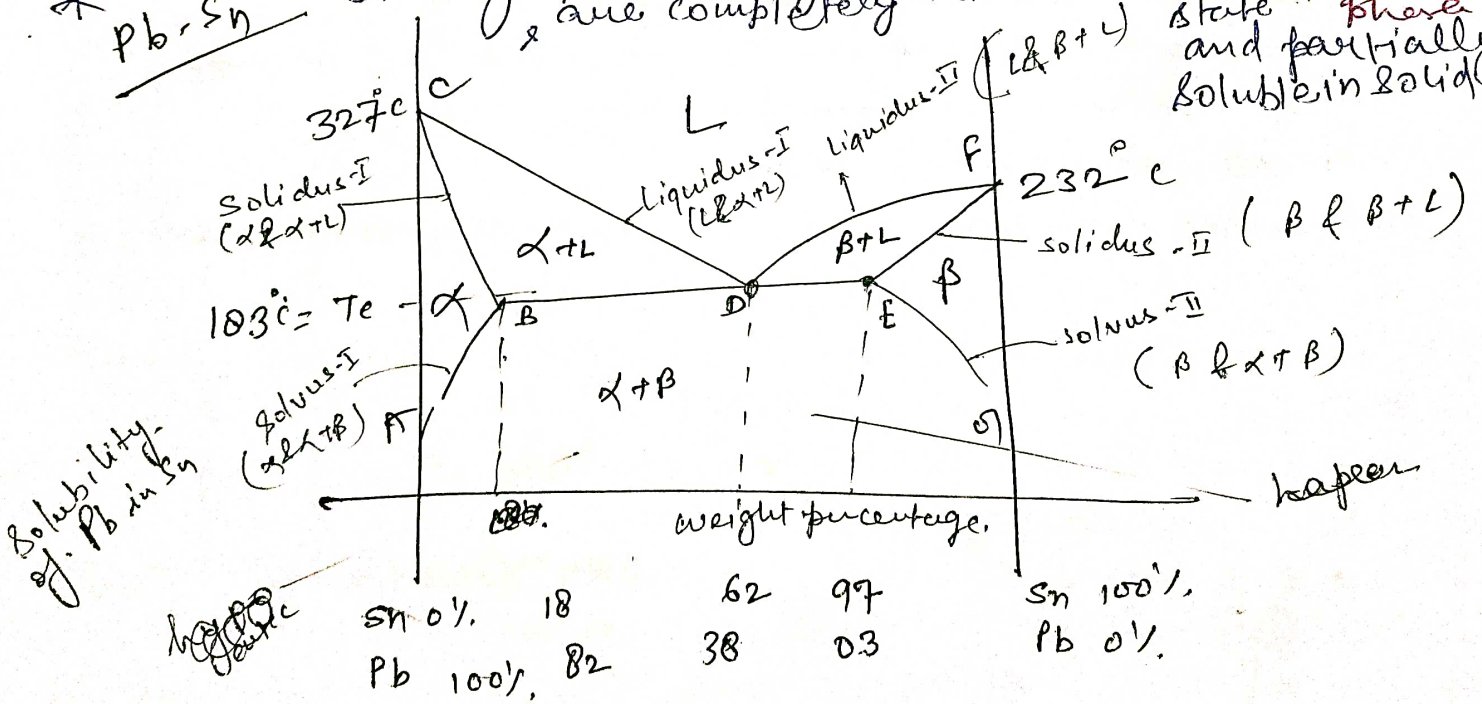
Peritectoid Reaction

When two solid phase transform into one solid phase, then this type of reaction called Peritectoid Reaction.



$\alpha + \beta$, Three phase field
 $\alpha + L$
 $\beta + L$

* Pb-Sn Binary phase diagram when materials are completely soluble in liquid state & single phase field and partially soluble in solid state.



Sn 0%	18	62	97	Sn 100%
Pb 100%	82	38	03	Pb 0%

$P + F = C + 1$
 For invariant reaction $F = 0$
 $P + 0 = C + 1$
 $P = 3$
 $L \rightleftharpoons \alpha + \beta$
 will be in equilibrium