

E-Content of INTERNET TECHNOLOGY AND WEB DESIGN

Chapter: 3.3 Connectivity Types

Topic: 3.3.2 Level Two Connectivity

Level Two Connectivity

- Level Two connection is also known as **Dial-up connection**.
- This provides connection to Internet through a dial-up terminal connection.
- The computer, which provides Internet access, is known as 'Host' and the computer that receives the access, is 'Client' or 'Terminal'.
- The client computer uses modem to access a "host" and acts as if it is a terminal directly connected to that host. 56K modem access is now widely available and supported by most ISPs.
- It allows user to surf the Web at 56 Kbps with graphics.
- So this type of connection is also known as 'Remote Modem Access' connection.
- And the host to which the client gets connected is actually connected to the Internet by a full time connection.
- In dial-up connection to Internet, Host carries all the command that are typed on a client machine and forward them to Internet.
- It also receives the data or information from the Internet on behalf of the 'Client' and passes it to them.
- The client computer acts as a 'dumb' terminal connected to remote host.
- This type of connection can further be divided into three categories.
 - Shell Connection
 - TCP/IP Connection
 - ISDN

E-Content of INTERNET TECHNOLOGY AND WEB DESIGN

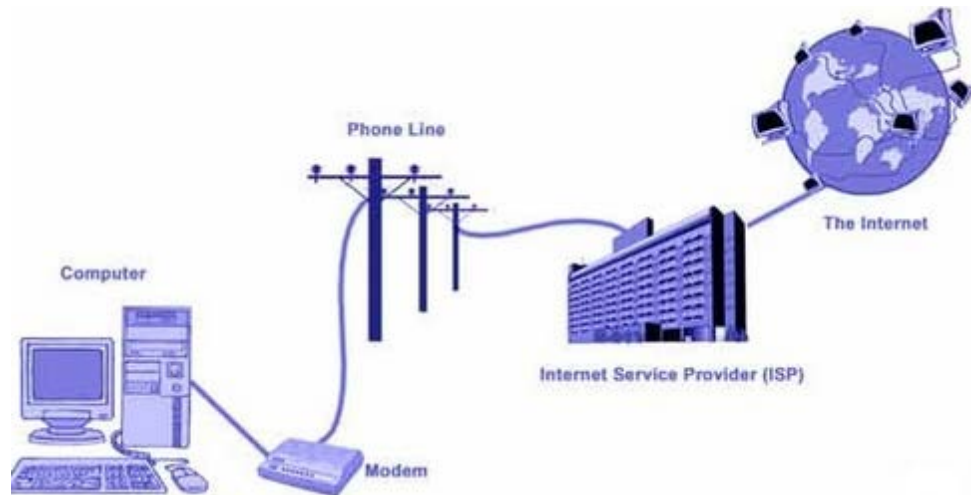


FIG 3.2: Dial-up Connection

- Shell Connection
 - In this type of Internet Connection, the user will get only textual matter of a Web Page.
 - This connection does not support Graphics display.
 - Shell Accounts were the only type of Internet access available for many years before the Internet entered in to the world of graphics and became more users friendly.
- TCP/IP Connection
 - Today's graphical World Wide Web browsers provide easier access with multimedia sound and pictures.
 - The major difference between Shell and TCP/IP account is that, Shell account can only display text and does not support graphics display, whereas TCP/IP can display both.
- ISDN

E-Content of INTERNET TECHNOLOGY AND WEB DESIGN

- ISDN (Integrated Services Digital Network) offers Internet connectivity at speeds of up to 128 Kbps through the use of digital phone lines. ISDN is a dial-up service that has been provided by telephone companies for many years.
- To access any of these dial-up accounts you need the followings:
 - ❖ Computer
 - ❖ Modem
 - ❖ Telephone Connection
 - ❖ Shell or TCP/IP/ISDN account from the ISP
 - ❖ Internet client software such as Internet browser

E-Content of INTERNET TECHNOLOGY AND WEB DESIGN

Chapter: 3.3 Connectivity Types

Topic: 3.3.3 Level Three Connectivity

Level Three Connectivity

- Leased connection is also known as direct Internet access or Level Three connection.
- It is the secure, dedicated and most expensive, level of Internet connection.
- With leased connection, your computer is delicately and directly connected to the Internet using high speed transmission lines.
- It is on-line twenty-four hours a day, seven days a week.
- It provides secure and private dedicated connection.
- It can be laid for people requiring extra high bandwidth.
- Provides symmetrical, uncontended high speed connection.
- It is reliable and dependable but it is very expensive to install.
- It is not suitable for single or home workers.

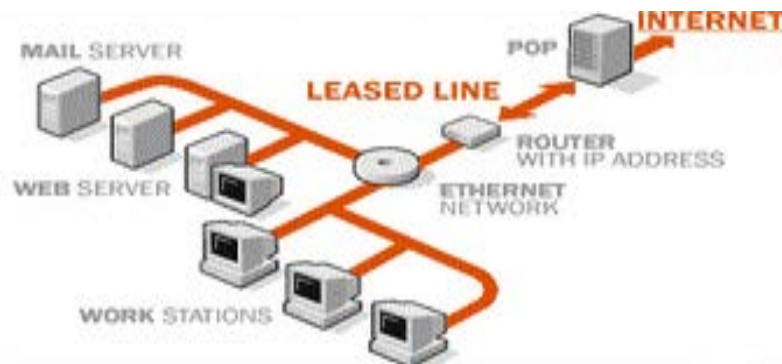


FIG 3.3: Leased Connection