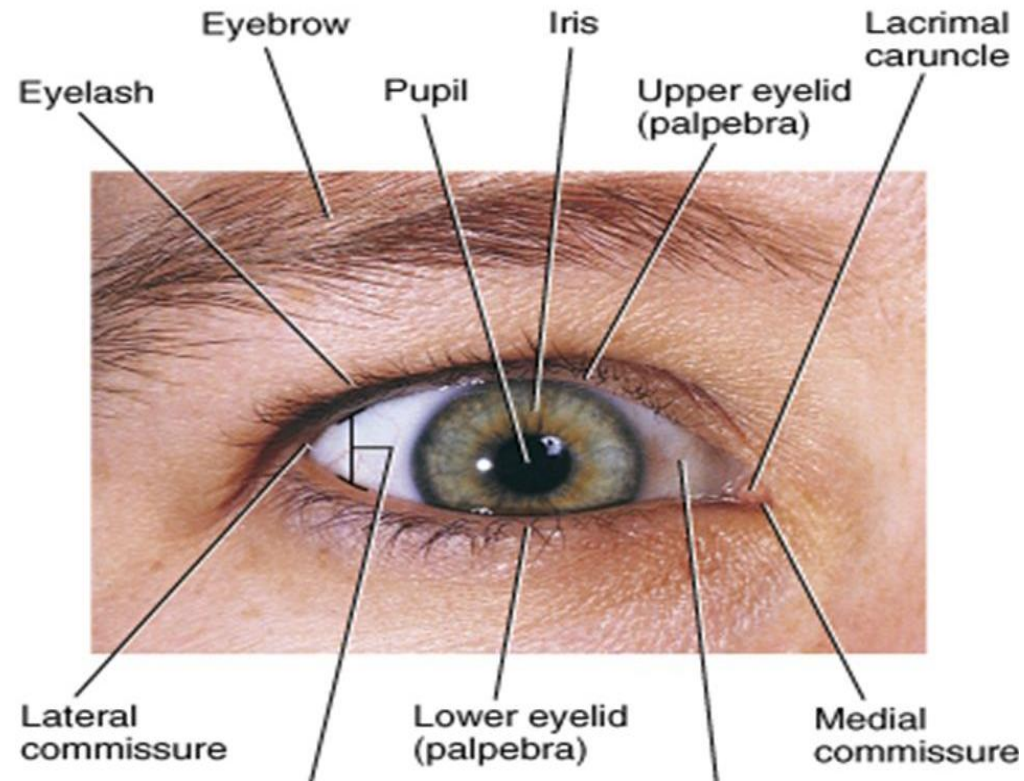


Anatomy of Eye

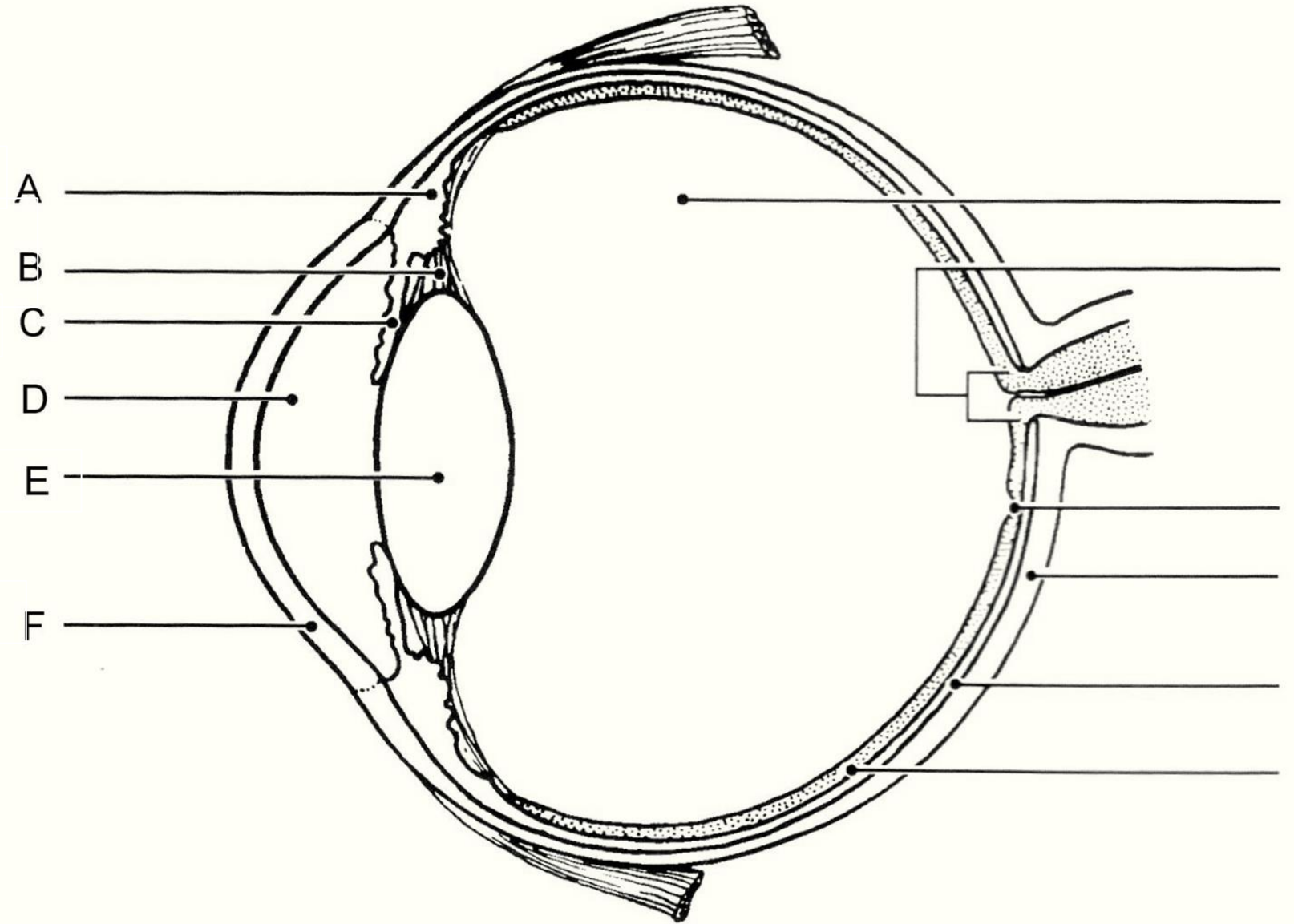
Physiology of Vision

COMPONENTS OF EYE



- The adult eyeball has a diameter of around 2.5 cm (1 in.).
- The eye ball is situated in a bony cavity known as orbital cavity or eye socket whose function is protection of the eye.
- Only one-sixth total surface area of eye is visible while the rest is depressed and protected by the orbit into which it fits.
- **Accessory Structures of Eye:**
 - The accessory structures of the eye include:
 - eyelids,
 - eyelashes,
 - eyebrows,
 - the lacrimal (tear-producing) apparatus, and
 - extrinsic eye muscles.

Ciliary body
ciliary zonule or
suspensory fragment
Iris
Aqueous humor
Lens
Cornea



G Vitreous humor
H Optic disc
I Fovea centralis
J Sclera
K Choroid
L Retina

RODS & CONES

