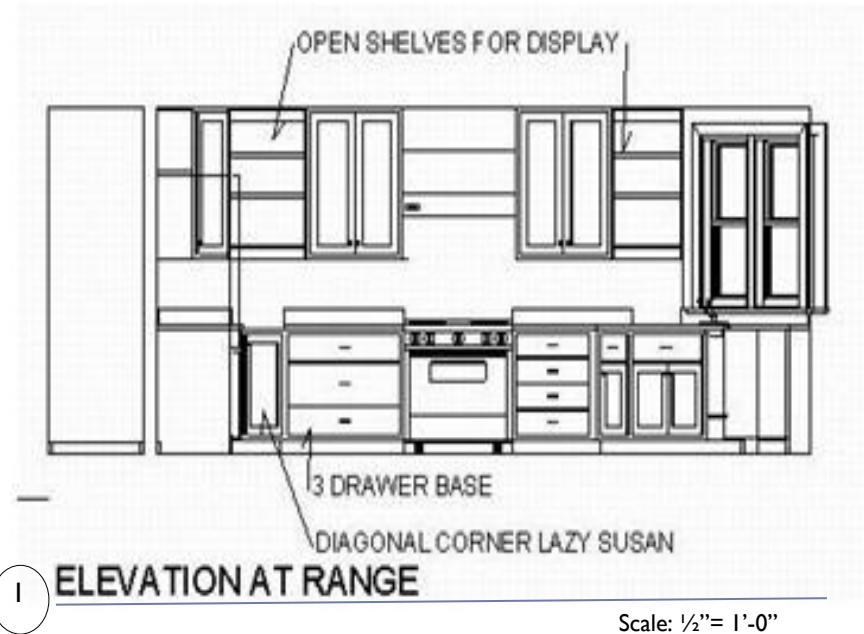


Kitchen Elevation

2 elevation drawings

Draw 2 elevation drawings

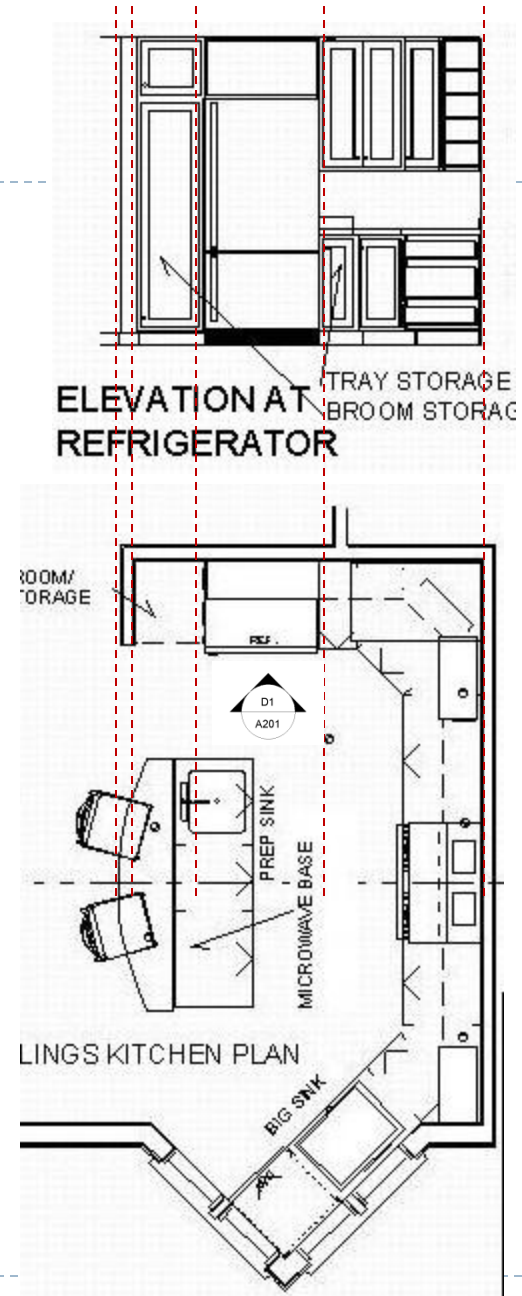
- ▶ Base on your Refine furniture plan
 - ▶ Select 2 ideal kitchen elevation views
 - ▶ Label the elevation symbols in the furniture plan
- ▶ Label elevation drawings with the title, elevation detail and scale



Kitchen elevation construction

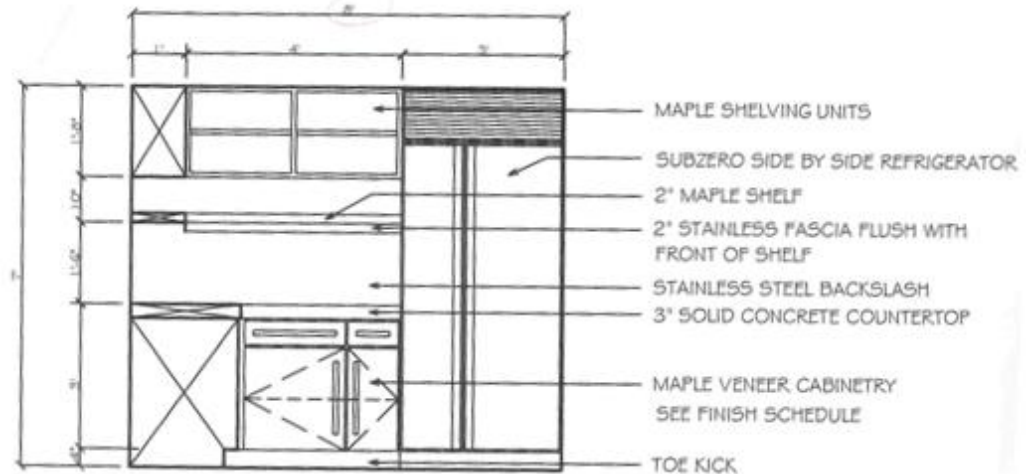
Label the elevation – **West elevation @ refrigerator**

- ▶ Find all your appliances and plumbing fixture
- ▶ Convey floor plan to elevation drawing
- ▶ Draw both elevations to 1/2" scale
- ▶ First, enlarge the floor plan to the right scale (1/2" scale)
 - ▶ so that the elevation will have the same scale as the plan (easy to work on)
- ▶ Using construction lines to construct the elevation from the floor plan
 - ▶ These lines only provide the horizontal dimension and location of the mass elements in elevation
 - ▶ Use scale to measure the vertical dimension of the mass elements in elevation



Great elevation - meet the requirement

- ▶ Notes on right
 - ▶ Line up all the notes
 - ▶ Show leader (light) and arrow (heavy)
- ▶ Dimension on top, bottom, and left
 - ▶ Dimension lines (light), numbers, and ticker marks (heavy)
- ▶ Very precise on dimension and clearance
- ▶ Show in details
 - ▶ Non architectural elements
 - ▶ Appliances, plumbing fixtures, and cabinetries (door, style)
 - ▶ Cabinet door swing
 - ▶ Shelving lines
 - ▶ Handles
 - ▶ Details
 - ▶ Lightings and furniture
 - ▶ Architectural elements
 - ▶ Door swing
 - ▶ Door handle 36" to 38" AFF
 - ▶ Frame, base board

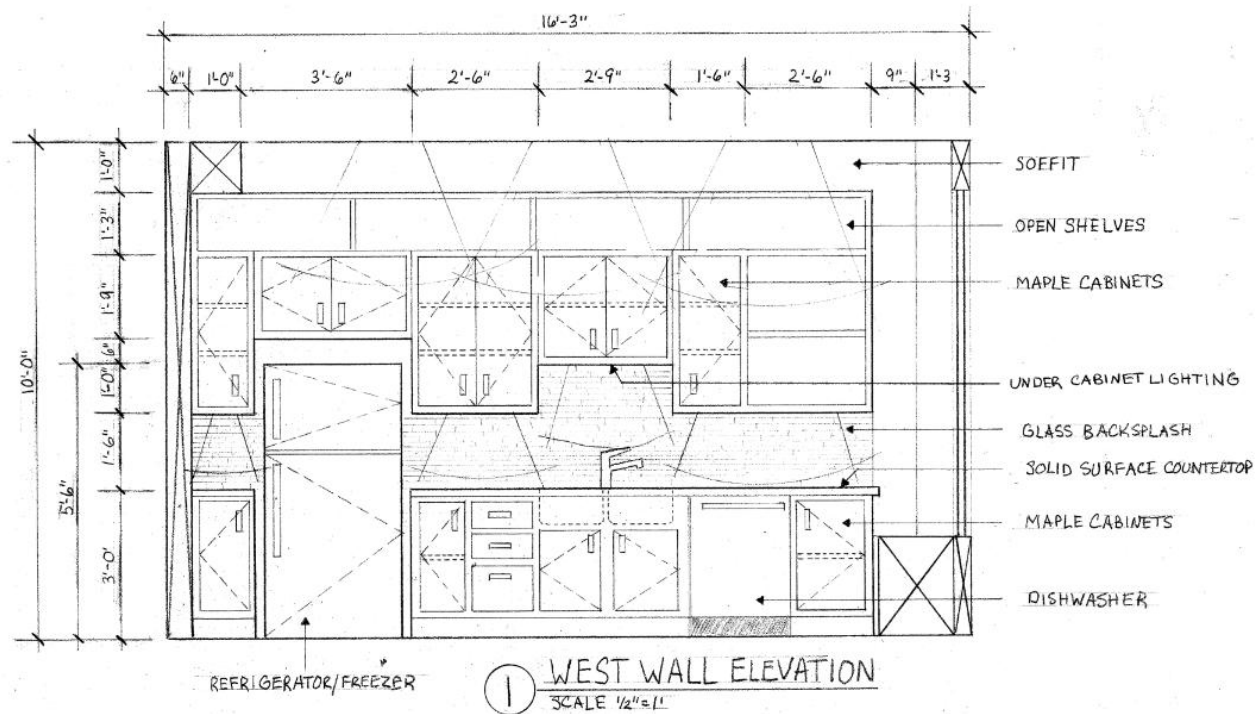


③ WEST WALL ELEVATION
SCALE: 1/4" = 1'-0"

Elevation line weights and types

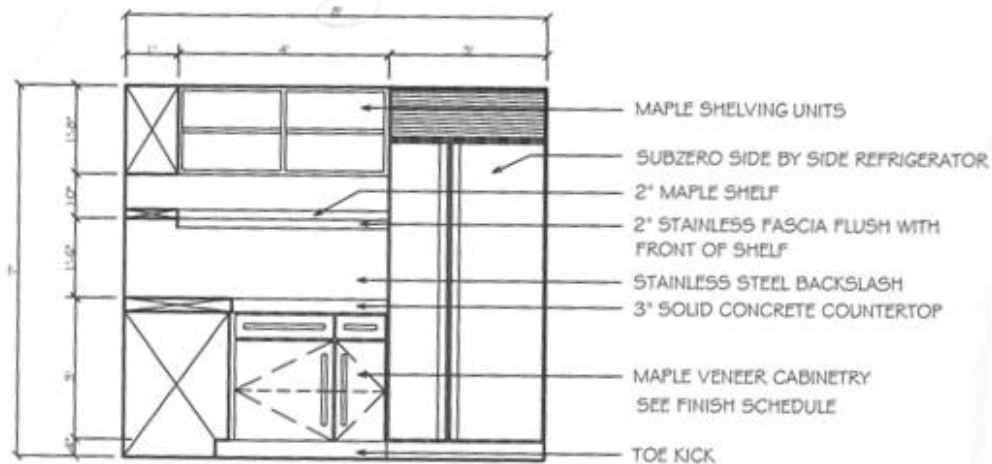
- ▶ Show line weights and types
 - ▶ Long dashed – door swing
 - ▶ Short dashed – shelving, sink bowl

KITCHEN ELEVATION 1

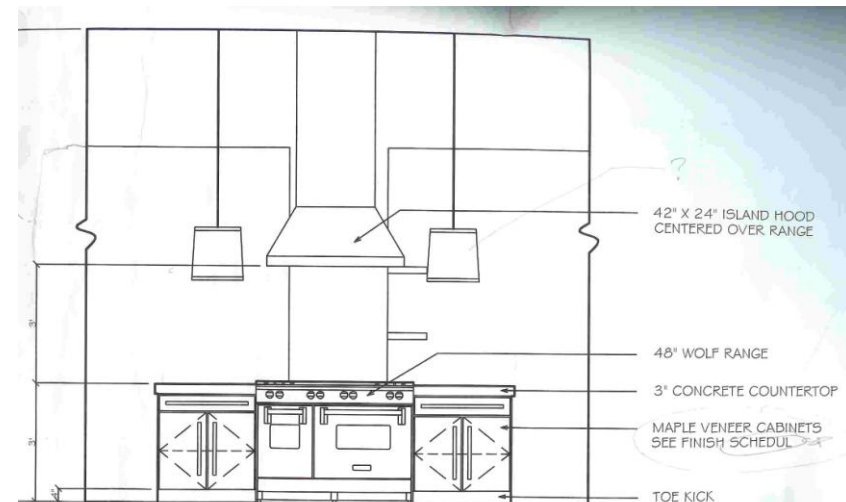


Label elevation

- ▶ Label elevation – elevation detail, scale, title, note, and dimension



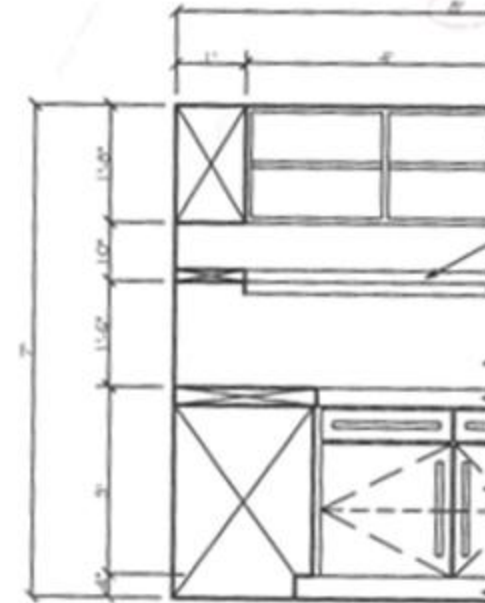
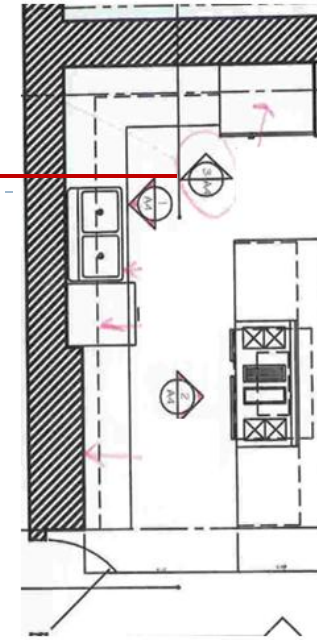
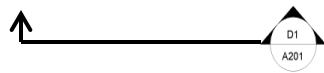
③ WEST WALL ELEVATION
SCALE: 1/8" = 1'-0"



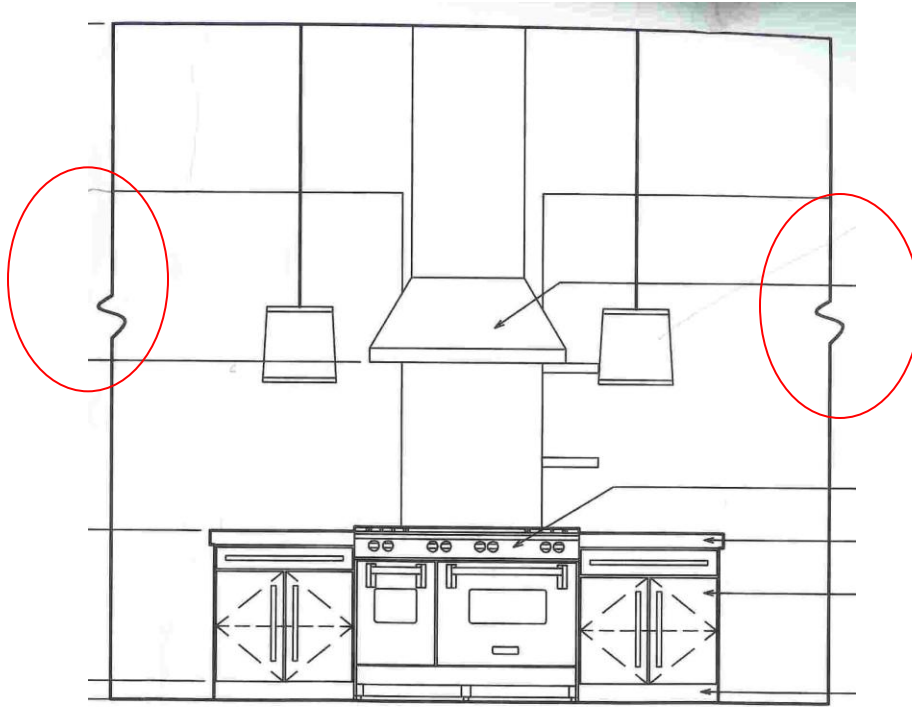
② ISLAND ELEVATION
SCALE: 1/8" = 1'-0"

Sectional cut elevation sym.

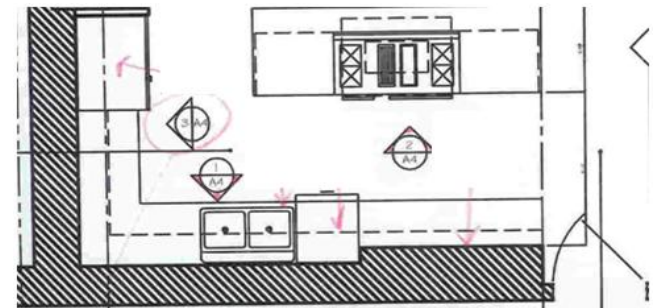
- ▶ Wall and base cabinet sectional cut – show details
- ▶ Wall and base cabinet (section cut elements) (heavy)
- ▶ Countertop (heavy)
- ▶ Backsplash (heavy)
- ▶ Floating shelf (heavy)
- ▶ Crossed section cut lines (light)



Break lines in elevation



Break line

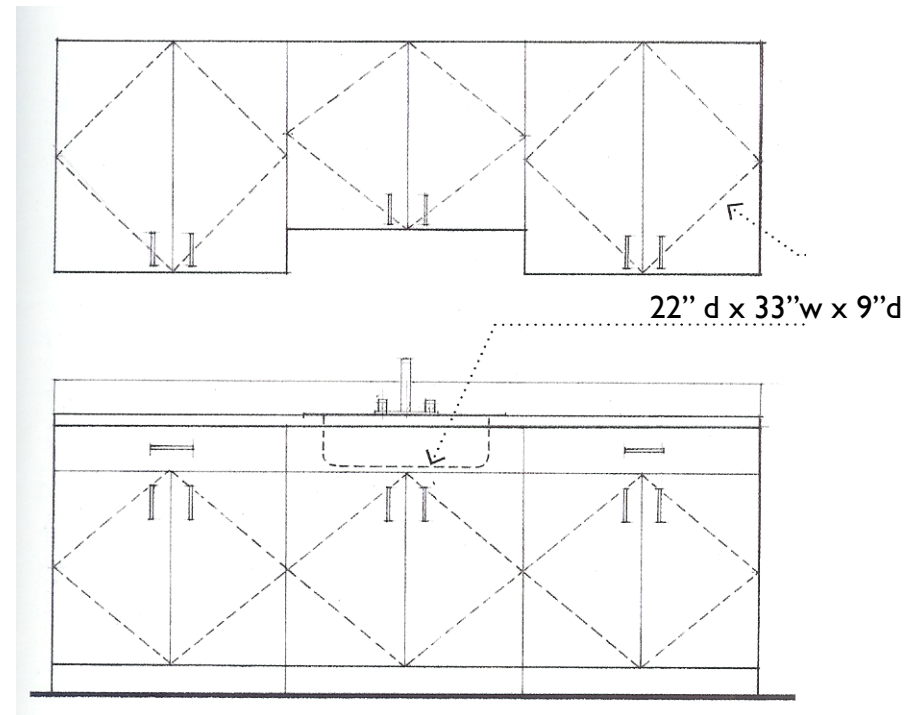


2 North Elevation @ kitchen island

Scale: $\frac{1}{2}'' = 1' - 0''$

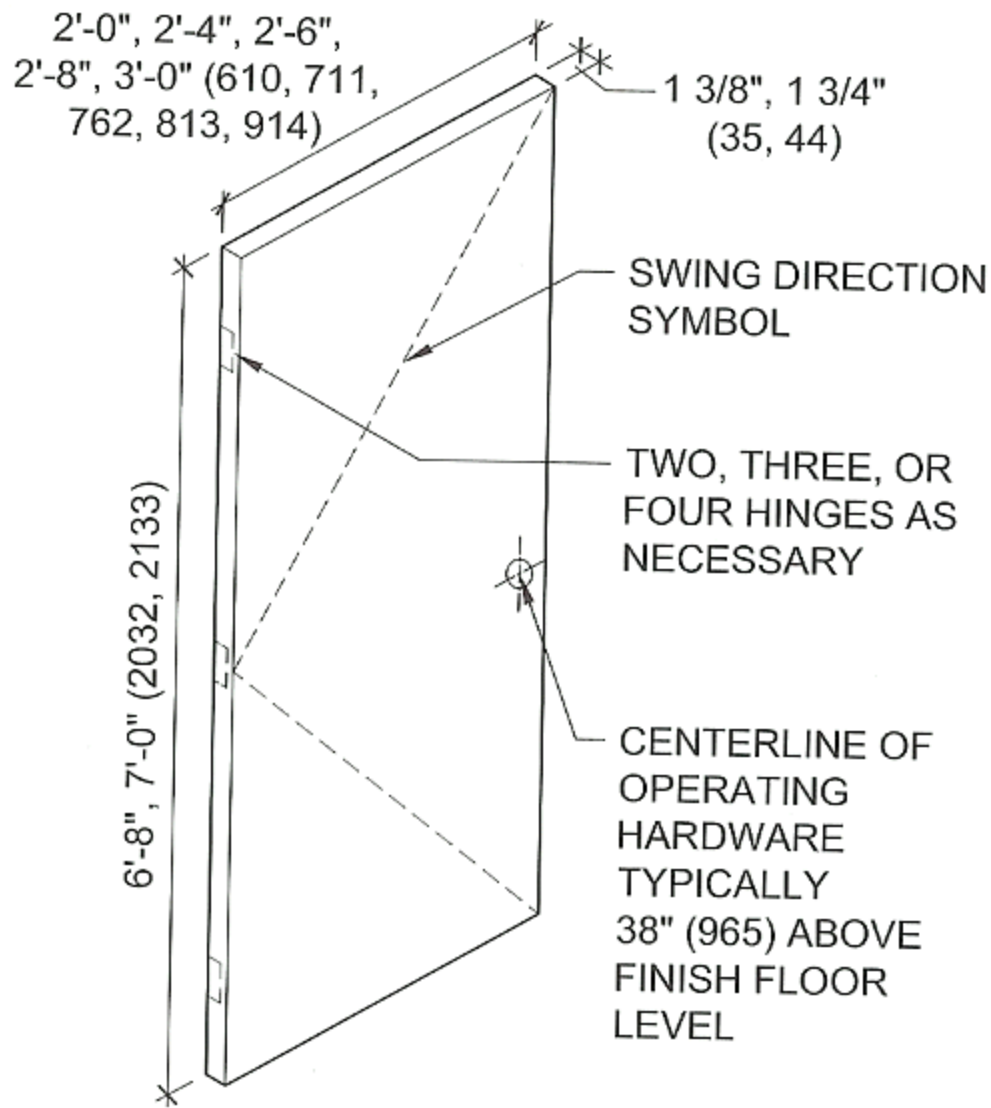
Line types – dashed lines and surface patterns

- ▶ **Light line – hidden object or line**
- ▶ **Use long dashed lines**
 - ▶ To indicate the swing direction of operable doors
- ▶ **Use short dashed lines**
 - ▶ To indicate the kitchen sink, wall cabinets shelving, hidden objects
- ▶ **Use light lines**
 - ▶ To draw surface patterns, molding patterns, back splash that are visible in elevation





Interior doors



STANDARD DOOR SIZES



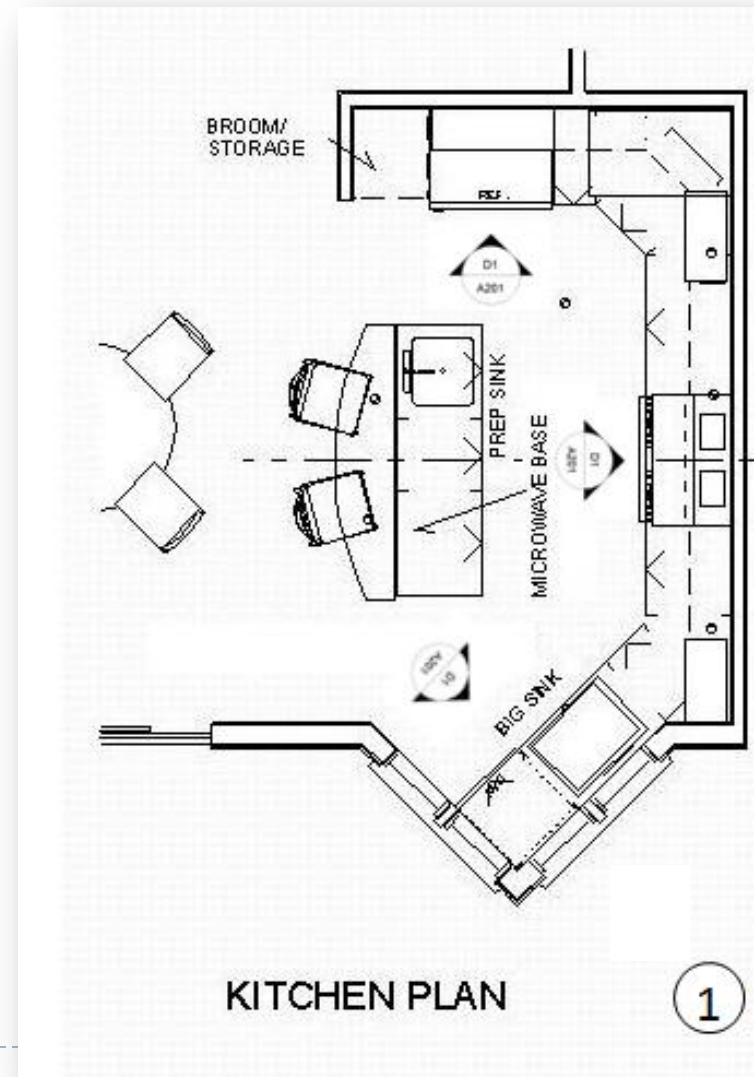
Standard door openings

- ▶ Entrance
- ▶ Typical interior door
- ▶ Closet door
- ▶ Pantry door
- ▶ Linen
- ▶ Bathroom
- ▶ Door Height 6'-8"
- ▶ Residential exterior 3'-0"
- ▶ Width interior usual 2'-6" (best is 2'-8")
- ▶ Linen Closet - 1'-6"
- ▶ Powder Room - 2'-0"
- ▶ Bathroom - 2'-0"

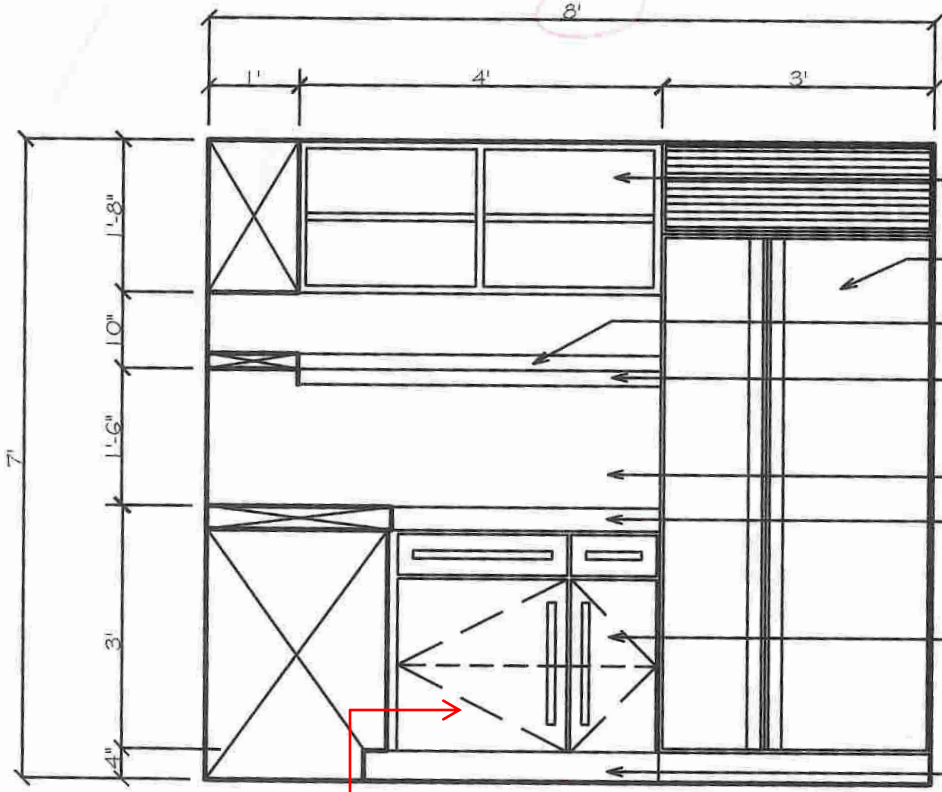


In class – draw 2 loose Kitchen elevations to scale

- ▶ 2 kitchen elevations
 - ▶ To scale
 - ▶ Dimension and notes
 - ▶ Provide details
 - ▶ Base on your refine furniture plan
 - ▶ No line weights



Notes on right

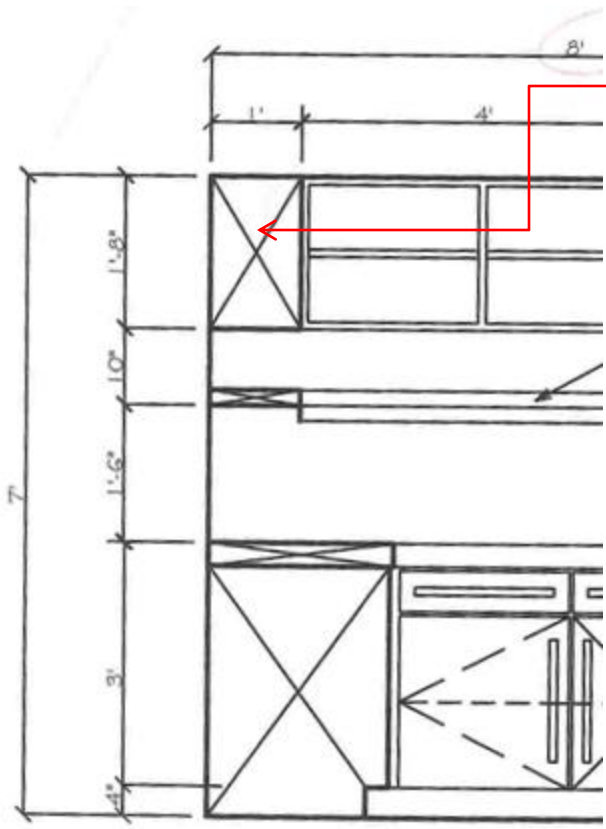


- MAPLE SHELVING UNITS
- SUBZERO SIDE BY SIDE REFRIGERATOR
- 2" MAPLE SHELF
- 2" STAINLESS FASCIA FLUSH WITH FRONT OF SHELF
- STAINLESS STEEL BACKSLASH
- 3" SOLID CONCRETE COUNTERTOP
- MAPLE VENEER CABINETRY
SEE FINISH SCHEDULE
- TOE KICK

Cabinet/ appliance door swing and shelving

3 WEST WALL ELEVATION

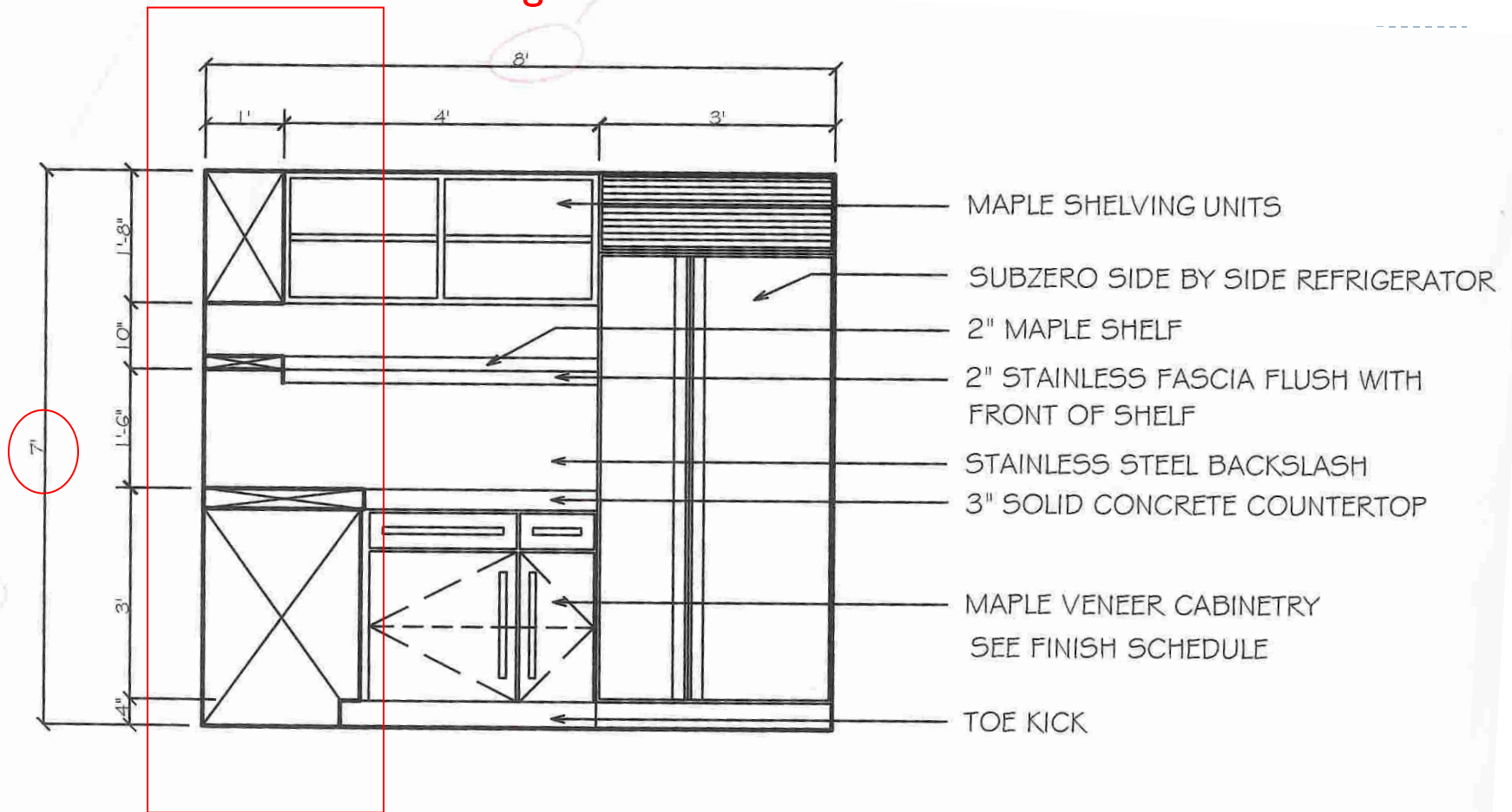
SCALE: 1/2" = 1'-0"




- ▶ Section cut (if applicable) – show crossed lines (light lines)
- ▶ Line weights
 - ▶ Heavy line – cut element/section, element closer to you, dimension, dimension marker, arrow head, notes, elevation profile line,
 - ▶ Intermediate line – furniture , appliances, built-ins,
 - ▶ Light line – pattern, texture, dimension line, section crossed lines, leader line
 - ▶ Light line - Dashed line – long and short
- ▶ Label elevation – elevation detail, scale, title (heavy line)
 - ▶ Intermediate line – circle symbol and the dividing line

③ WEST WALL ELEVATION
SCALE: 1/2" = 1'-0"

Section cut – heavy line
Dimension lines - light



③ WEST WALL ELEVATION
SCALE: 1/2" = 1'-0"



Creative beams, soffit and ceiling
design

