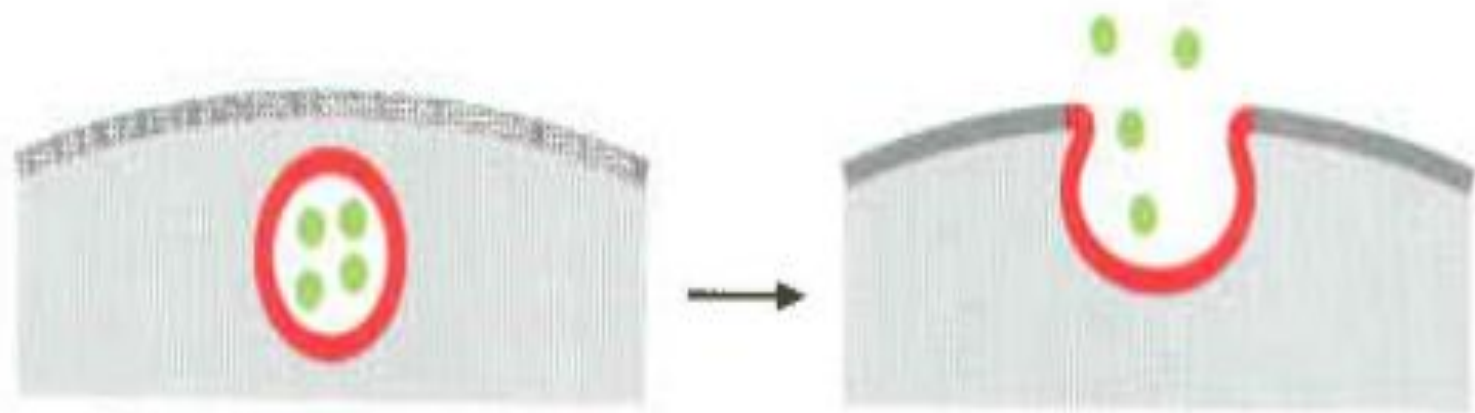
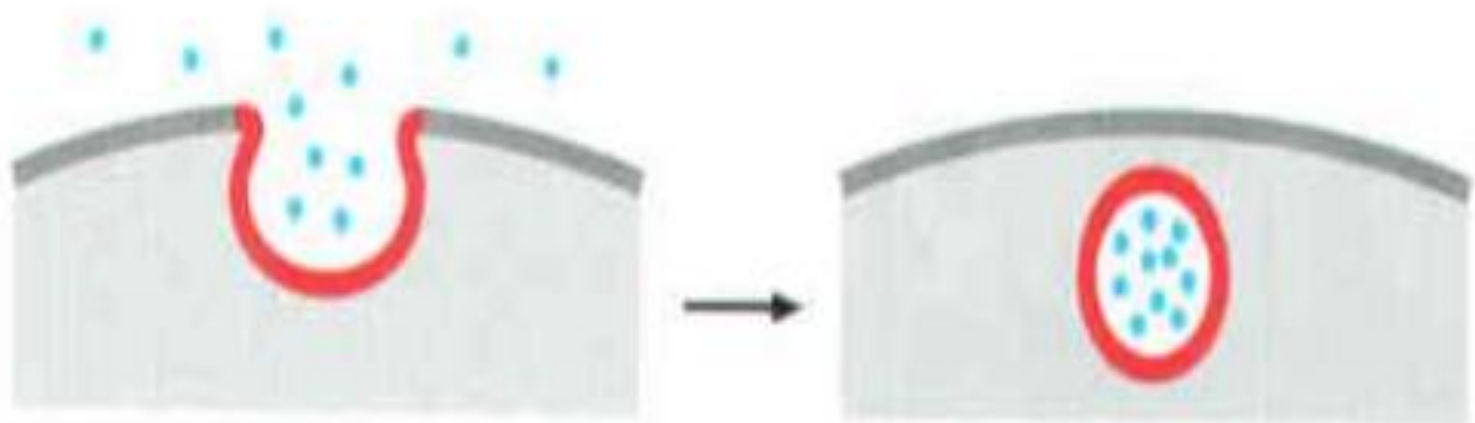


Protein trafficking

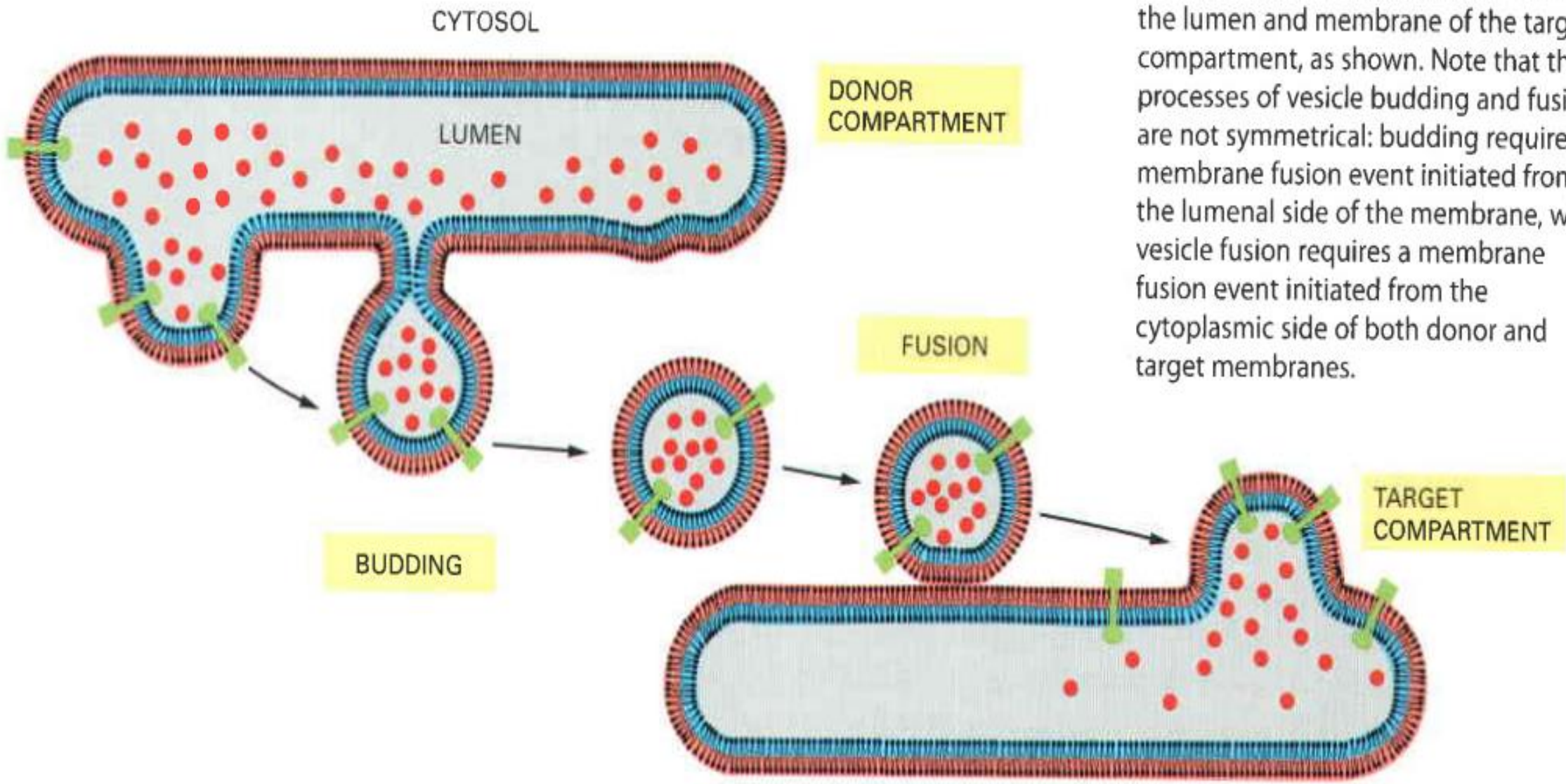


(A) exocytosis



(B) endocytosis

the lumen and membrane of the target compartment, as shown. Note that the processes of vesicle budding and fusion are not symmetrical: budding requires membrane fusion event initiated from the luminal side of the membrane, while vesicle fusion requires a membrane fusion event initiated from the cytoplasmic side of both donor and target membranes.



CYTOSOL

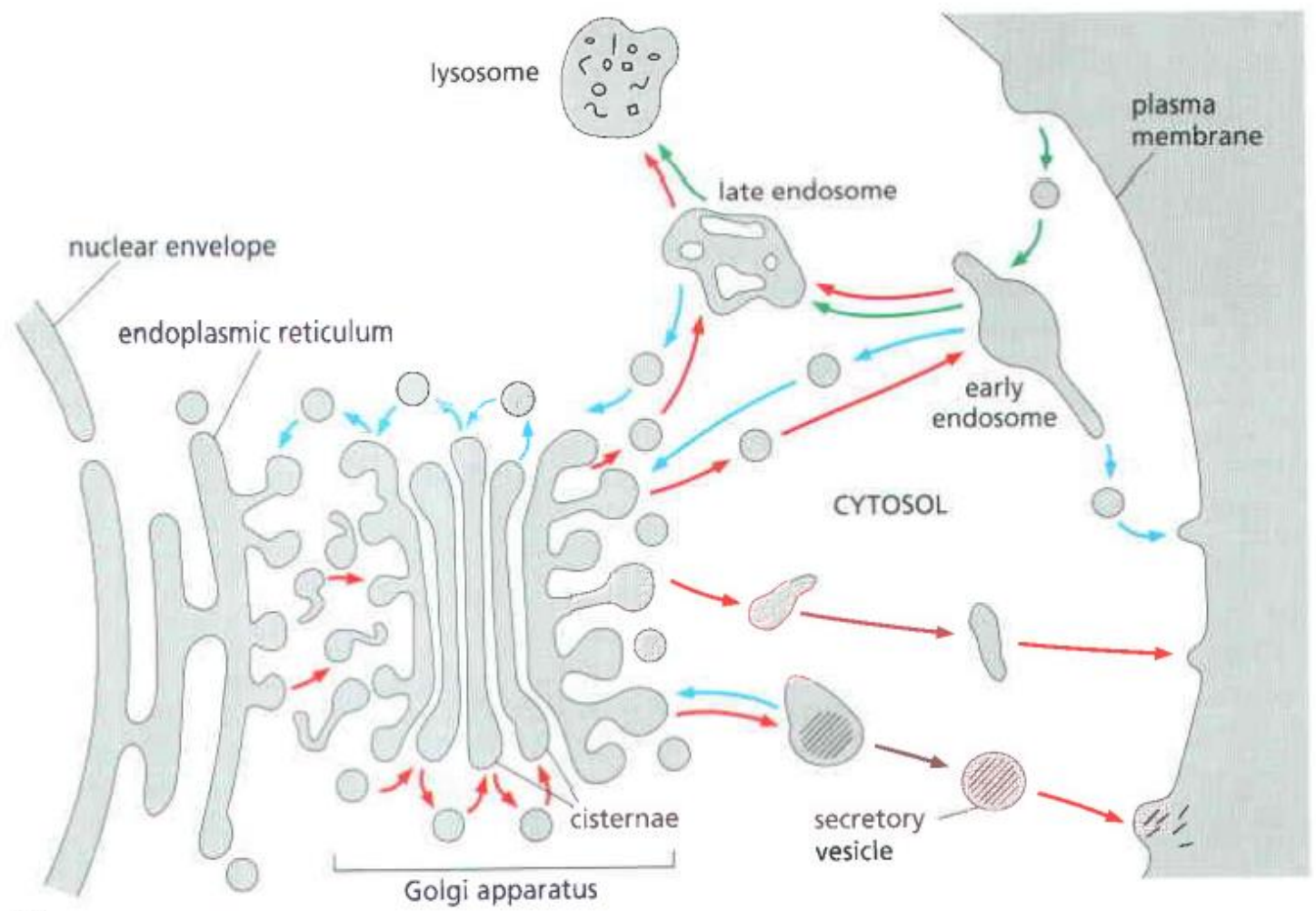
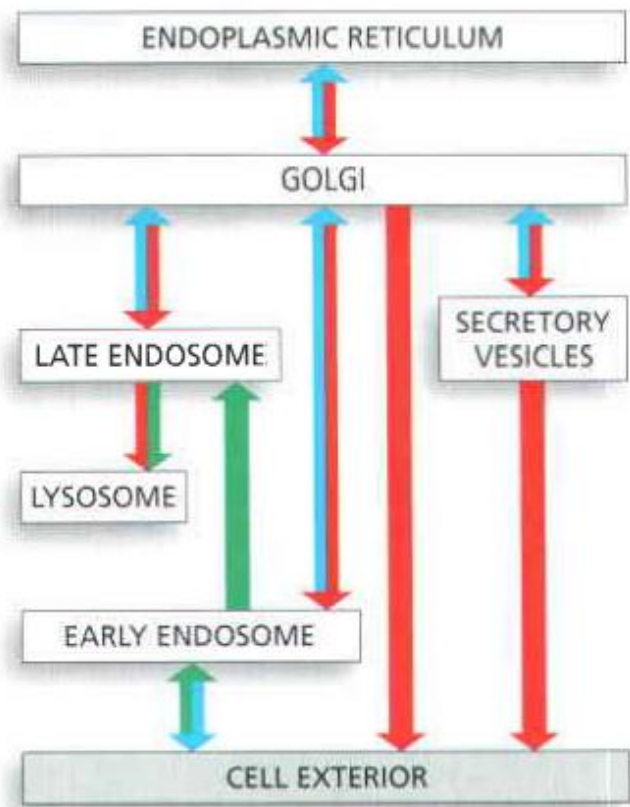
LUMEN

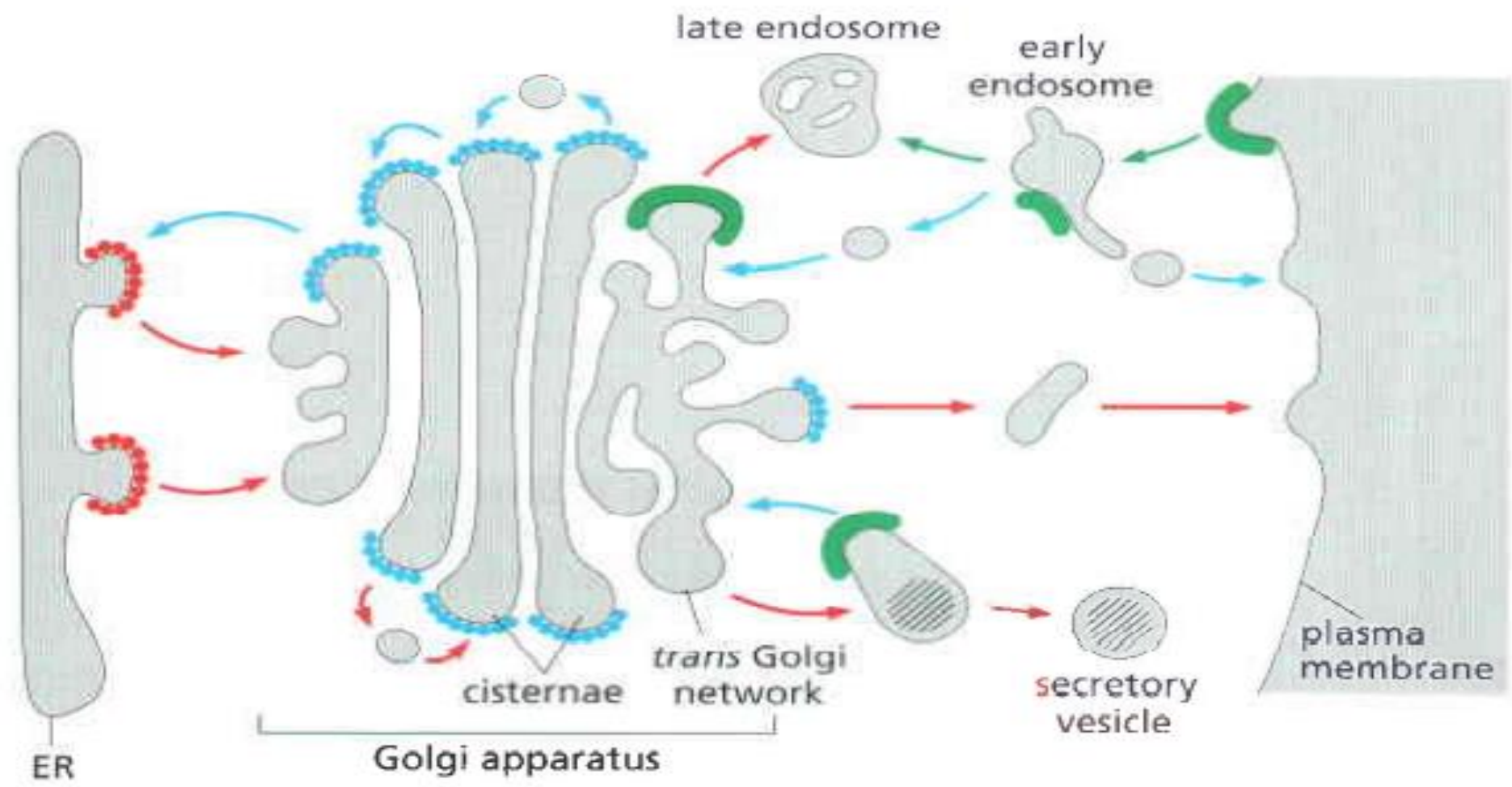
DONOR COMPARTMENT

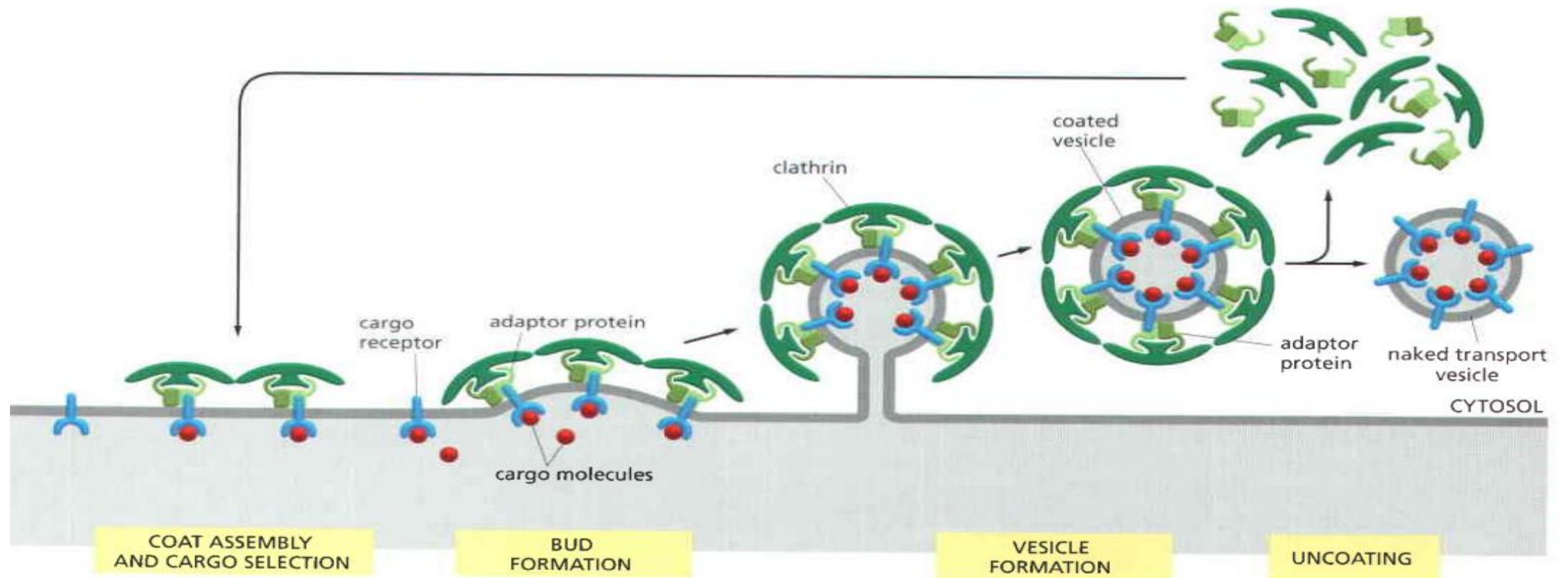
FUSION

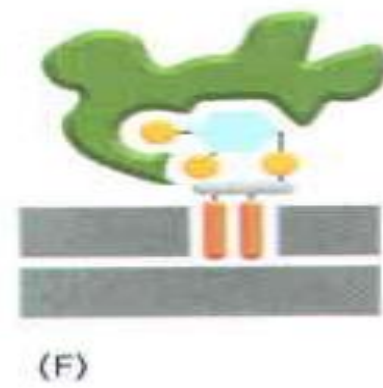
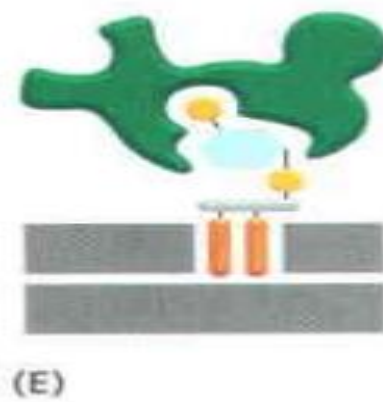
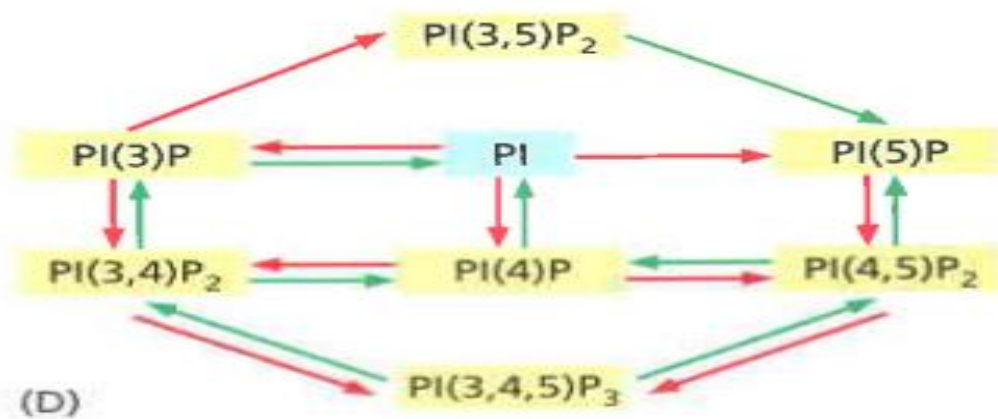
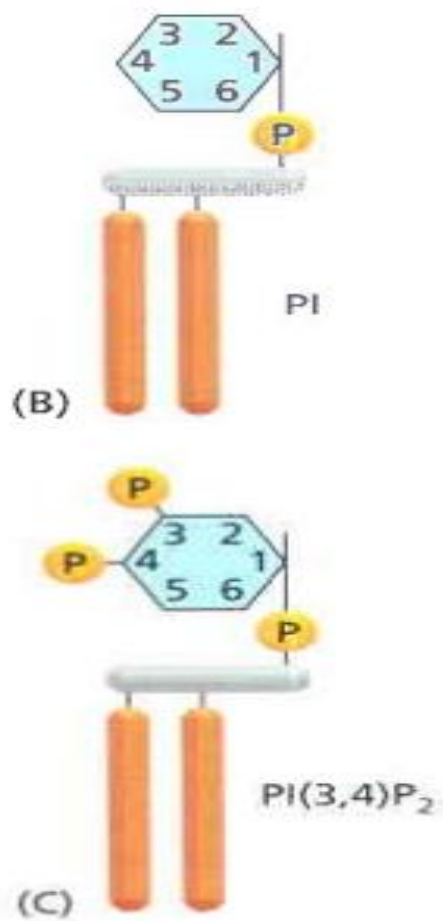
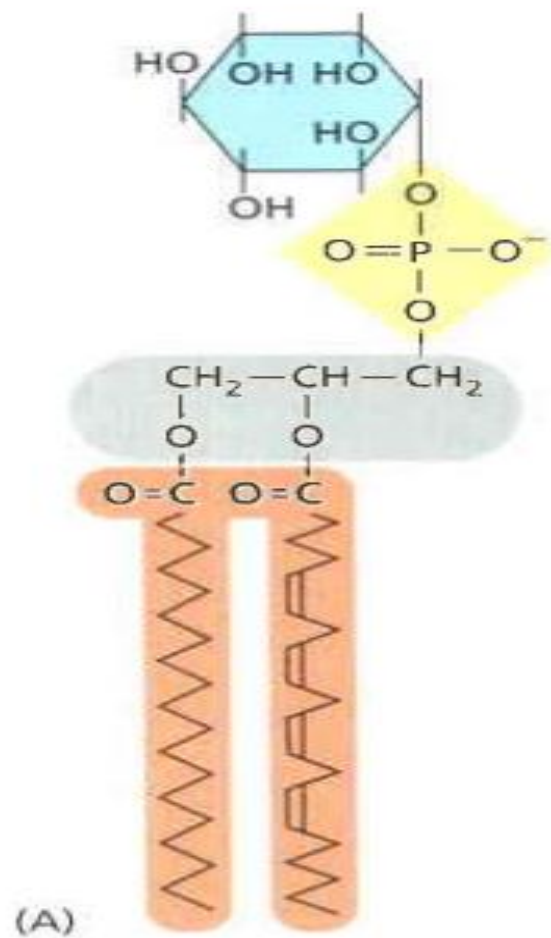
BUDDING

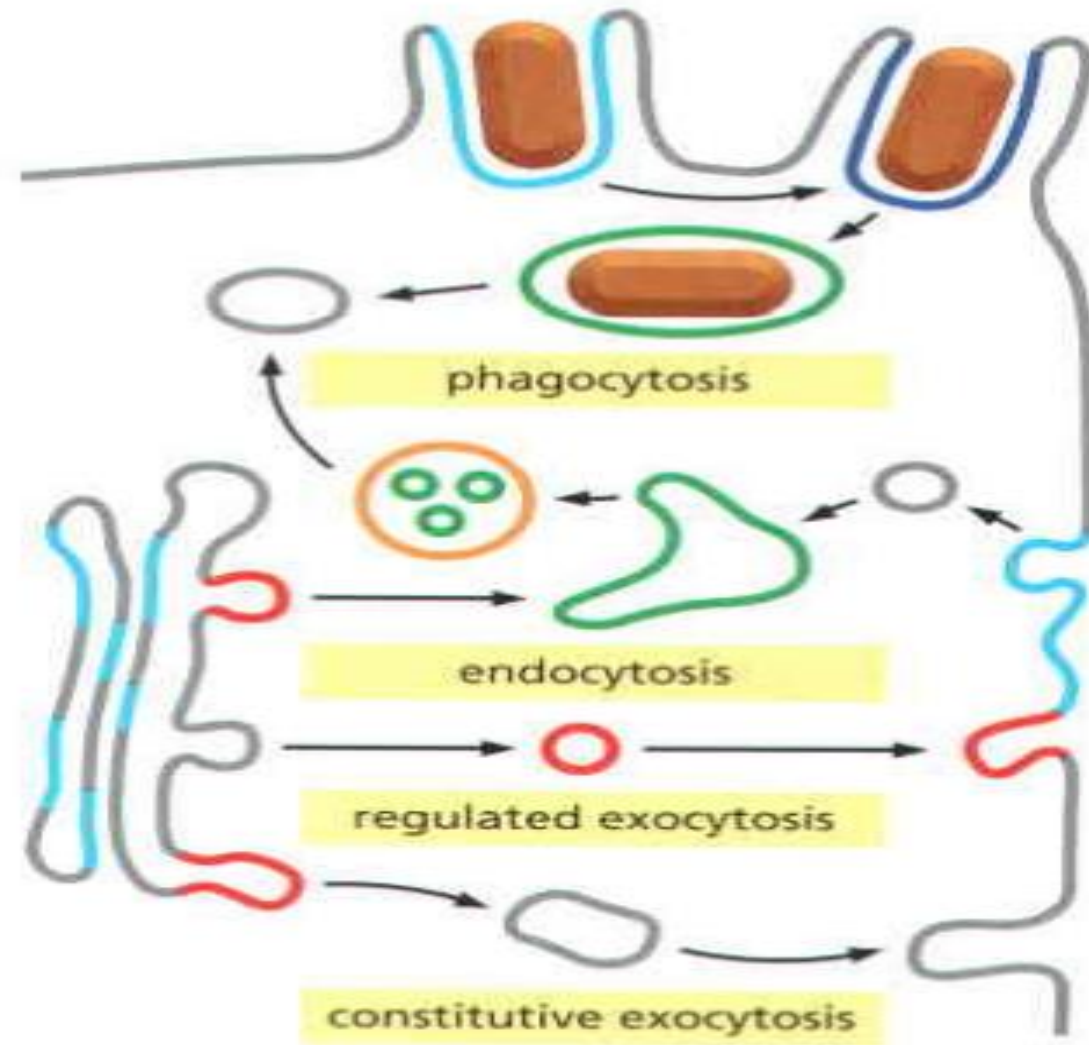
TARGET COMPARTMENT











- KEY:**
- PI(3)P
 - PI(4)P
 - PI(4,5)P₂
 - PI(3,5)P₂
 - PI(3,4,5)P₃