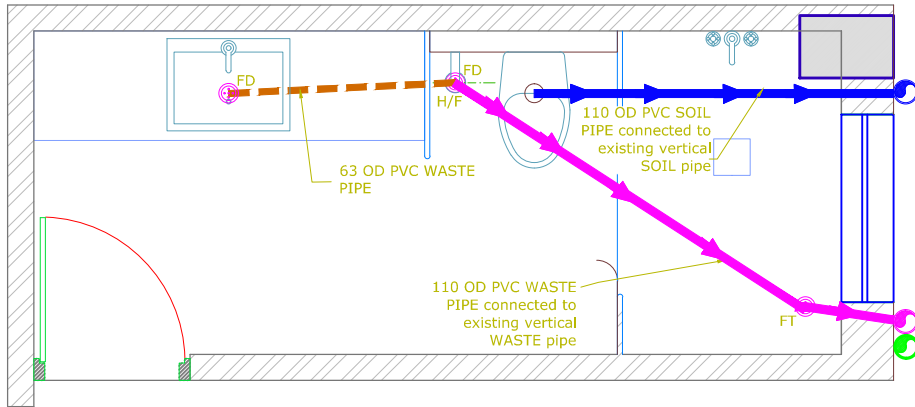







LINE OUT PLAN



DRAINAGE LAYOUT PLAN

PLUMBING NOTES:-

1.	WASH BASIN TO FLOOR TRAP (FT) 40 OD uPVC WASTE PIPE.
2.	KITCHEN SINK TO FLOOR TRAP (FT) 50 OD uPVC WASTE PIPE.
3.	FLOOR DRAIN (FD) TO FLOOR TRAP (FT) 63 OD uPVC WASTE PIPE.
4.	110 OD uPVC PIPE USED FOR SOIL & WASTE.
5.	110 OD uPVC PIPE USED FOR TERRACE RAIN WATER.
6.	90 OD uPVC PIPE USED FOR BALCONY.
	HEALTH FAUCET
	63 OD PVC WASTE PIPE
	110 OD PVC WASTE WATER PIPE
	110 OD PVC SOIL PIPE
	110 OD PVC RAIN WATER PIPE