

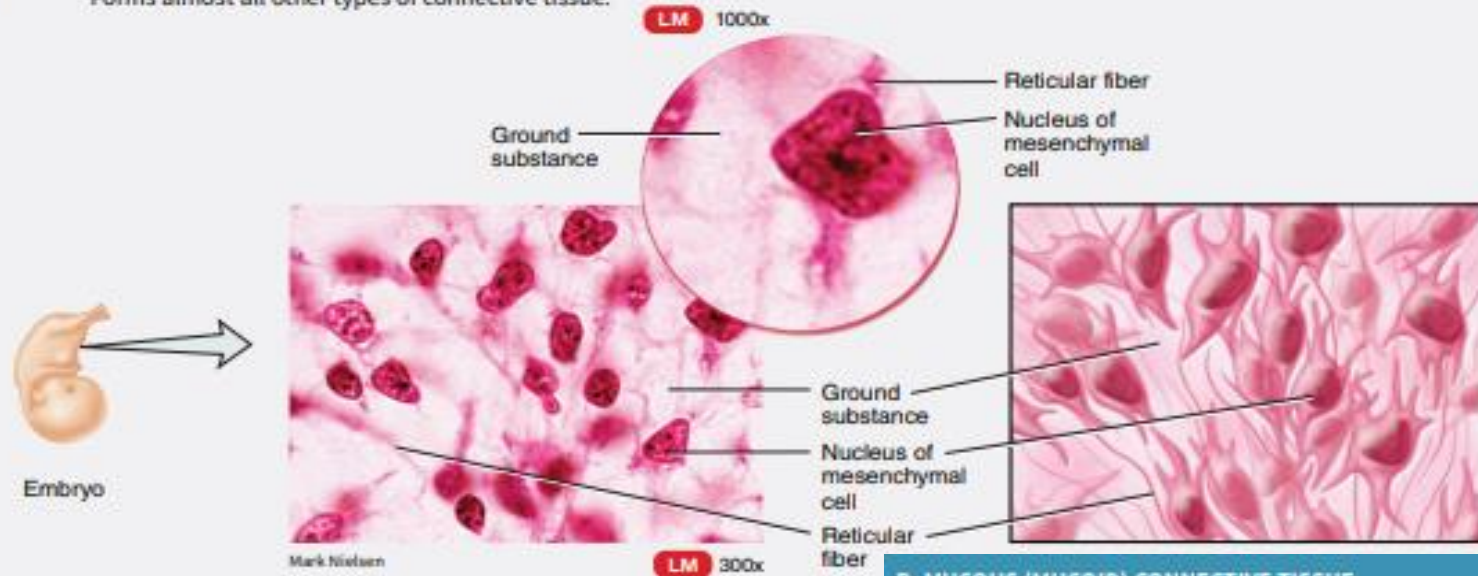
# Embryonic connective tissue

## A. MESENCHYME

**Description** Mesenchyme has irregularly shaped mesenchymal cells embedded in semifluid ground substance that contains delicate reticular fibers.

**Location** Almost exclusively under skin and along developing bones of embryo; some in adult connective tissue, especially along blood vessels.

**Function** Forms almost all other types of connective tissue.

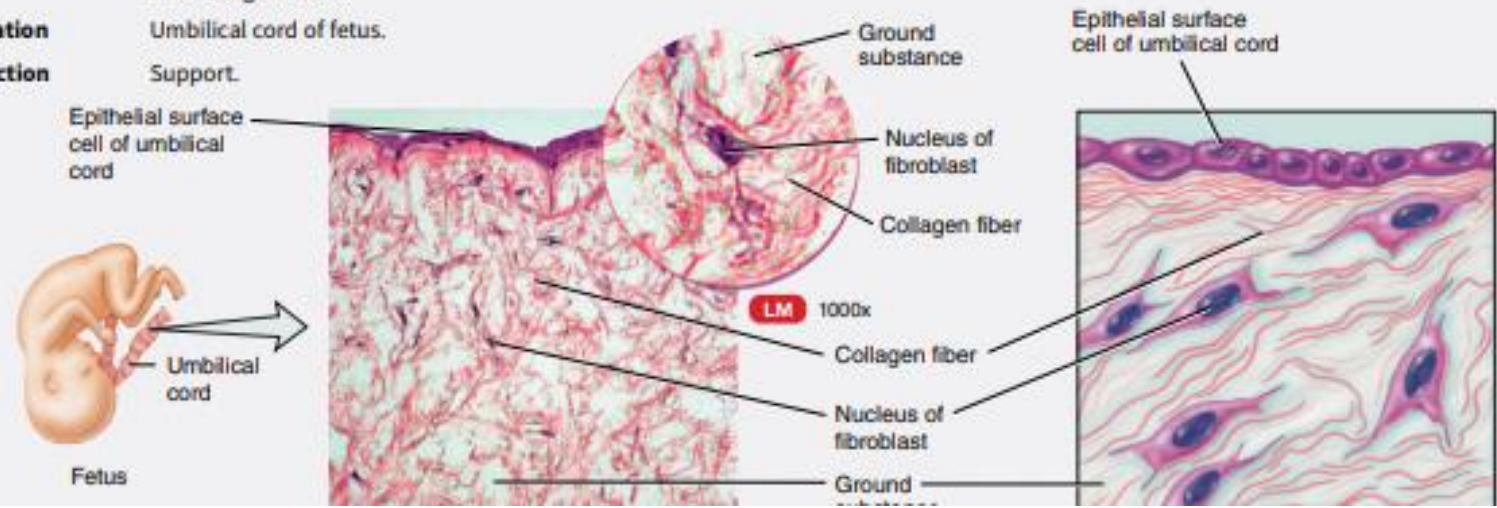


## B. MUCOUS (MUCOID) CONNECTIVE TISSUE

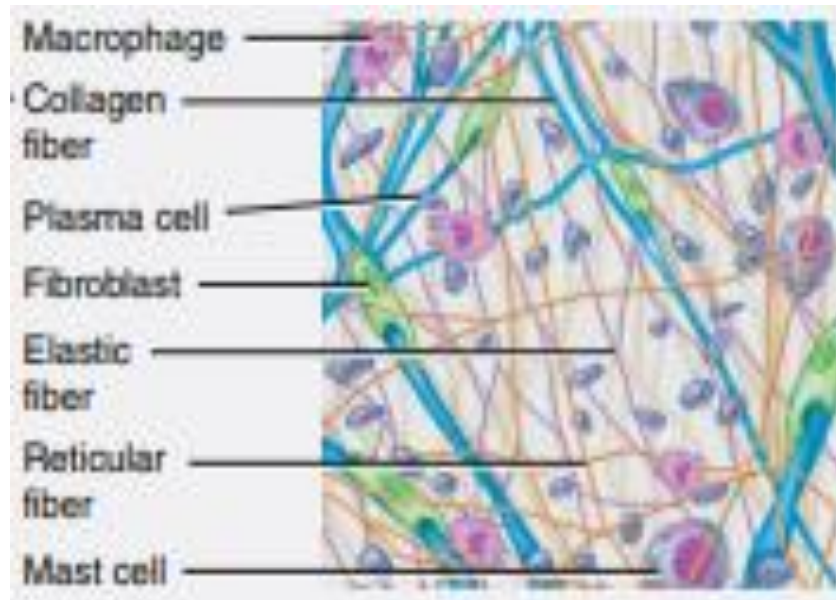
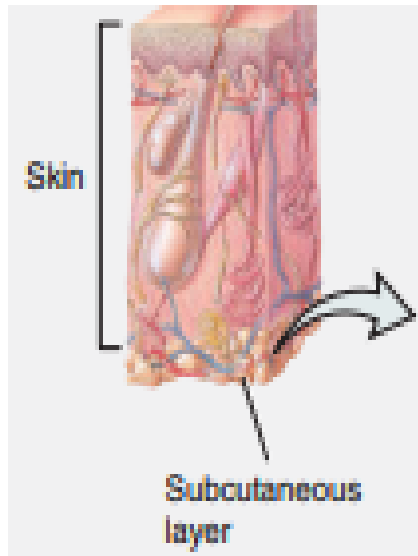
**Description** Mucous (mucoid) connective tissue has widely scattered fibroblasts embedded in viscous, jellylike ground substance that contains fine collagen fibers.

**Location** Umbilical cord of fetus.

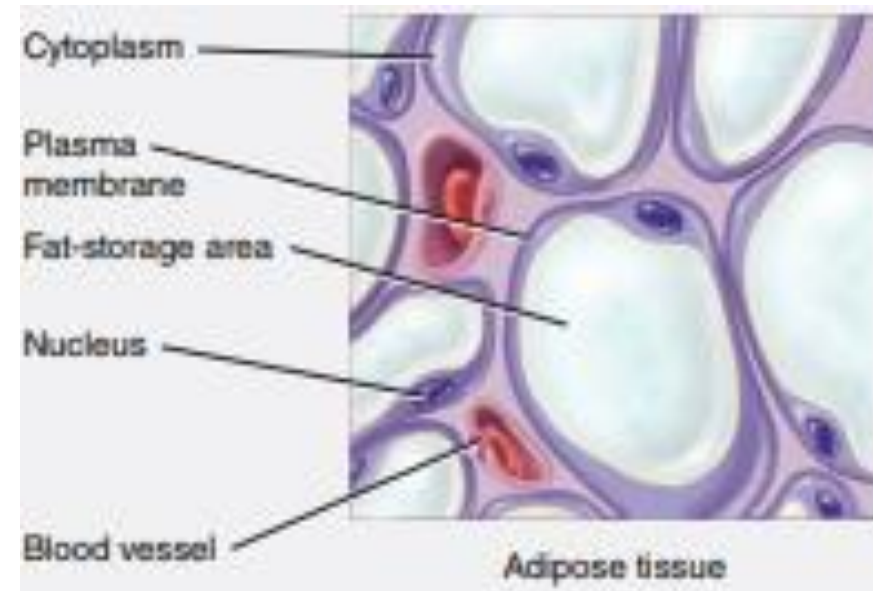
**Function** Support.



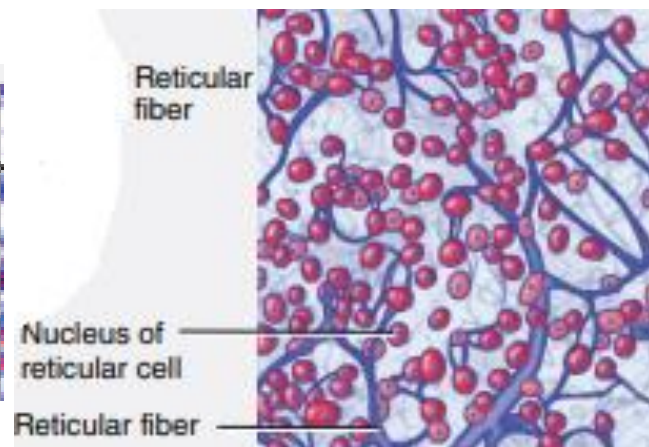
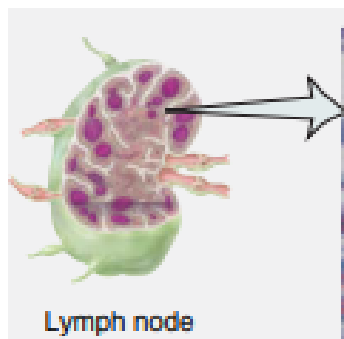
# Mature Connective Tissue: Connective Tissue Proper—Loose Connective Tissue



AREOLAR CONNECTIVE TISSUE



ADIPOSE TISSUE



RETICULAR CONNECTIVE TISSUE

## Dense regular & irregular connective tissue

